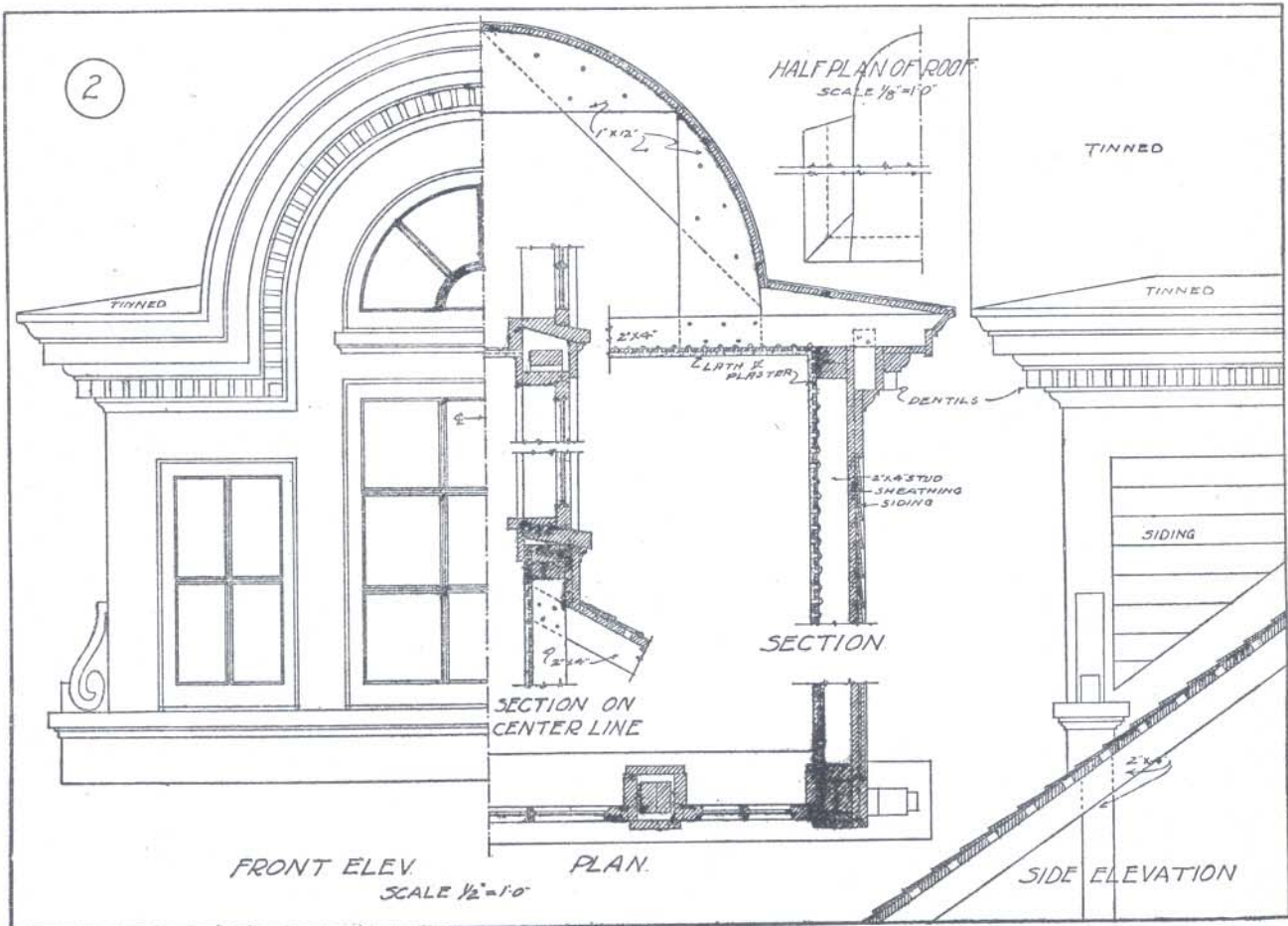
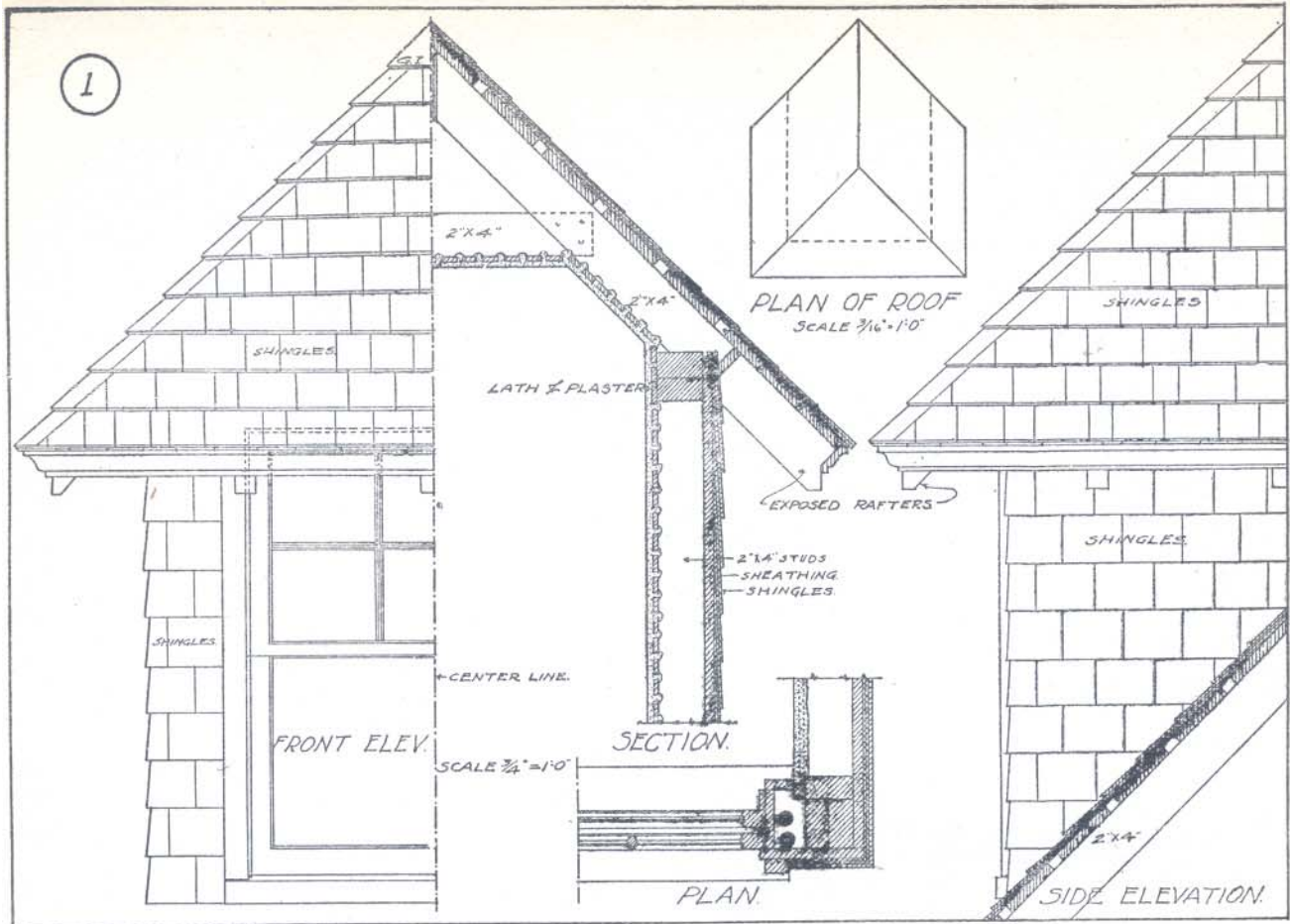
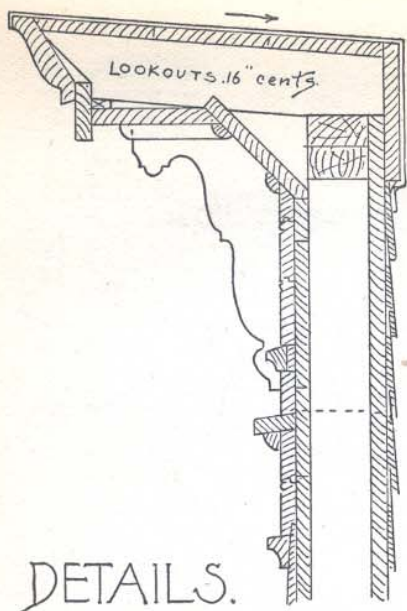
The background of the cover is a grid of architectural drawings. The top-left panel shows a cross-section of a roof with rafters and a chimney. The top-right panel shows a window with a grid pattern and a decorative frame. The middle-left panel shows two columns with capitals. The middle-right panel shows a cross-section of a wall with a window opening. The bottom-left panel shows a cross-section of a wall with a window opening. The bottom-right panel shows a staircase with a balustrade and a column. The text is overlaid on these drawings.

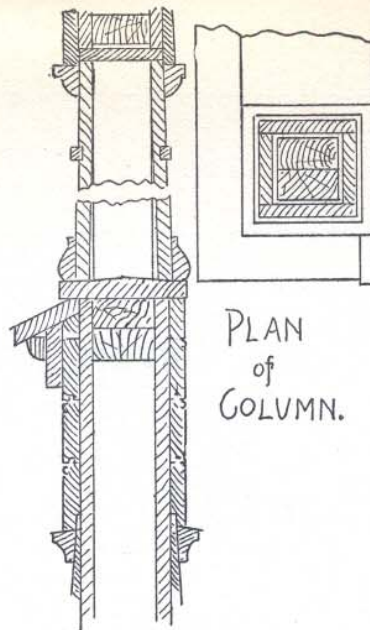
RADFORD'S
DETAILS
OF
BUILDING
CONSTRUCTION



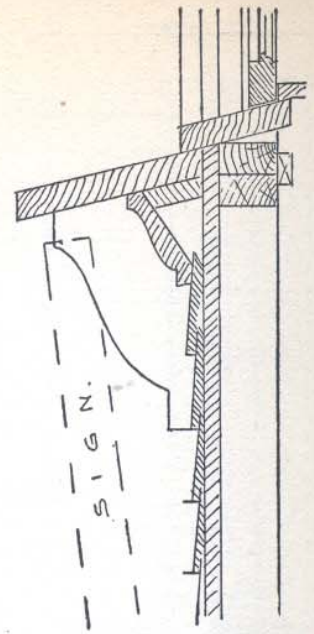


DETAILS.

CORNICE.



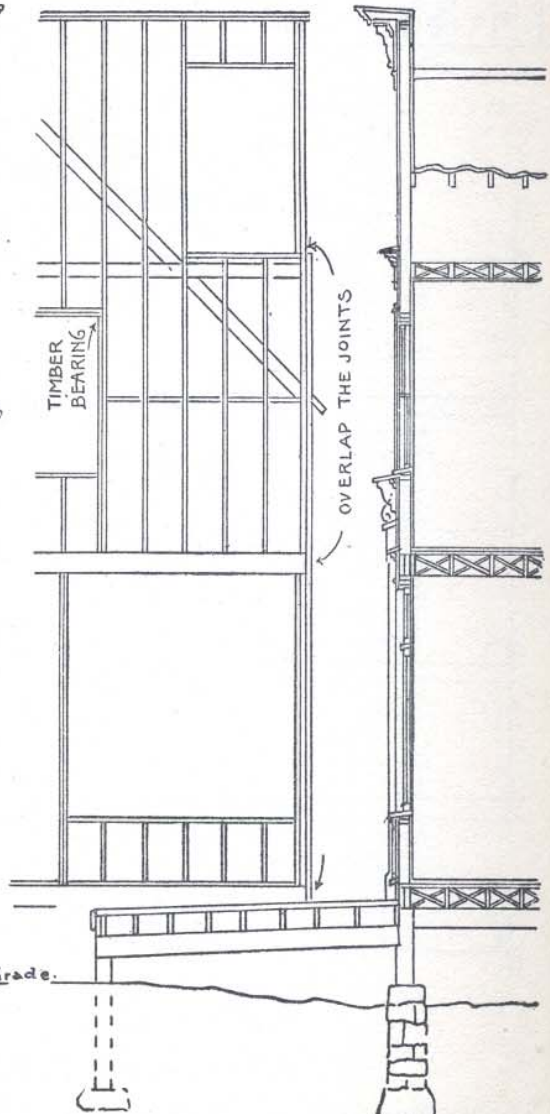
COLUMN.



WINDOW SILL.



FRONT ELEVATION.



FRAMING.

SECTION.

PLATE 94—FRONT FOR GENERAL STORE

Design and details. This is a design that is neat and attractive in appearance and is easily constructed. It is an agreeable change from the billboard like fronts usually seen. The details show

how the cornice should be framed to secure firmness; also how various parts of the building should be constructed. Note broad window sill ledge bracketed out to shelter the sign.