

14550

20 -

no 7189



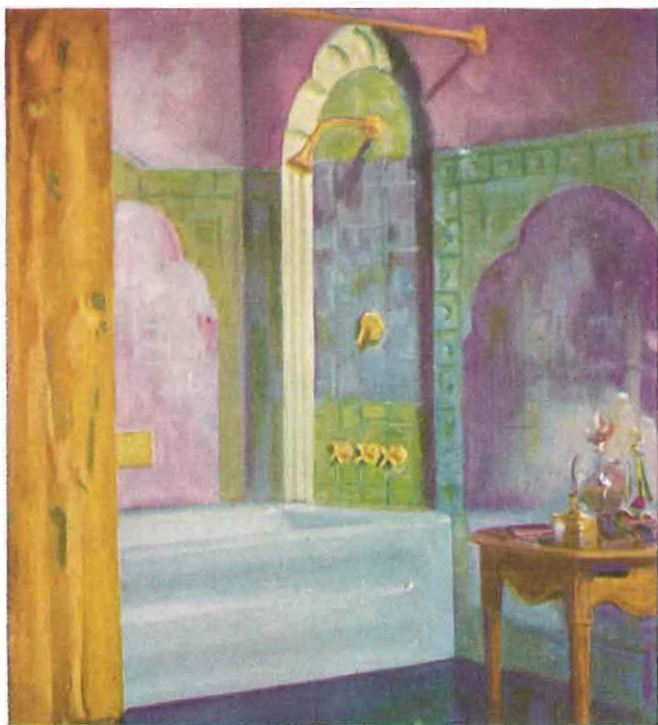
"Standard"
PLUMBING FIXTURES
for the HOME

Mike Jahr 1989



"Standard" Plumbing Fixtures and china fittings are made in the colors illustrated on this page. Each center disk is a "Standard" fixture color. It is surrounded by three colors which combine with it harmoniously and which represent a simple color scheme with the color at the bottom for the floors, the color at the top right, the walls, and the color at the top left, the dominant tone in the draperies.

The distinguishing characteristic of "Standard" colors is purity. It is this characteristic which makes possible that harmony with other colors, so essential to lasting satisfaction.



AS YOU read this book the conviction will come to you that the bathroom can be the most distinctive, as well as the most essential, room in your home. It is the one room that distinguishes an American home of today from the homes of all other lands and all other times.

This salient characteristic of America, the bathroom, is a symbol of the highest standard of hygiene and home sanitation that has ever existed.

The **Standard Sanitary Mfg. Co.** has taken an important part in the attainment of this high standard of living. As the world's largest manufacturer of plumbing fixtures, this company has pioneered improvements in the construction and design of plumbing fixtures which have promoted the health, comfort and happiness of a whole nation.

And now by creating new and beautiful designs for plumbing fixtures in a variety of exquisite colors, "**Standard**" has made it possible to think of the bathroom in terms of beauty as well as utility.

These new styled plumbing fixtures in color have made a modern interior of the old-fashioned bathroom in thousands of homes, and contributed, as nothing else can, to their comfort and livability.

Note the reasonableness of the prices as you turn the pages and refer to page 58, if interested in the "**Standard**" Time Payment Plan.





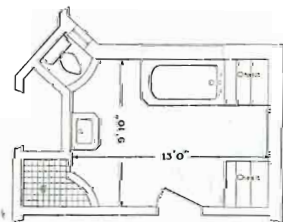
THE ORCHID OF VINCENNES BATHROOM

Orchid of Vincennes,—this color, like all the "Standard" colors, was inspired by and derives its name from, some historic achievement in the ceramic art. The name is a tribute to the high degree of artistry attained by the craftsmen of the potters of old Vincennes in the time of Louis XIV of France. Here, in the Royalton Bath, the Castleton Lavatory and Master Madera Water-closet, this delicate color is given a harmonious setting of green, blue and black.

There are certain interesting facts you must know about the manufacture of colored plumbing fixtures before you can select them with fine discrimination.

The ideal materials for the making of plumbing fixtures are vitreous china and enameled iron. The processes of their manufacture are different and from that difference arises the difficulty of obtaining the same shade of color in the bath which is enameled as in the water-closet which must be vitreous china, or in the lavatory which may be either vitreous china or enamel.

Since no two manufacturers make the same colors, all the colored fixtures you select for your bathroom should be made by the same company.



Prices for the Fixtures in this Bathroom:

	IN COLOR	IN WHITE
ROYALTON Bath—P 2360 G (Finish G) 5½ ft. (In A-R Enamel).....	\$372.15	\$325.95
CASTLETON Lavatory—F 71 G (Finish G)	425.00	385.00
MASTER MADERA Closet—F 2025.....	124.00	99.00
K 151 Shower (Finish G)	92.65	92.65
Total	\$1013.80	\$892.60





THE MING GREEN BATHROOM

Ming Green, the fresh, cheerful green of growing things, is so named because it was the official color of the great Ming Dynasty which directed the destiny of China from 1368 to 1644 A. D.

In this bathroom design the Ming Green of the Recess Pembroke Bath, the Penwood Lavatory with its modern lines, and the improved Madera Water-closet, is the key color for a beautiful decorative scheme of green and rose, with accents of magenta and gold.

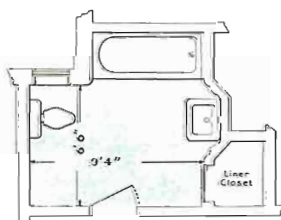
When you come to remodel your old bathroom or build a new one, you will find that good taste in the selection and use of the plumbing fixtures and materials is more important than the price you pay for them.

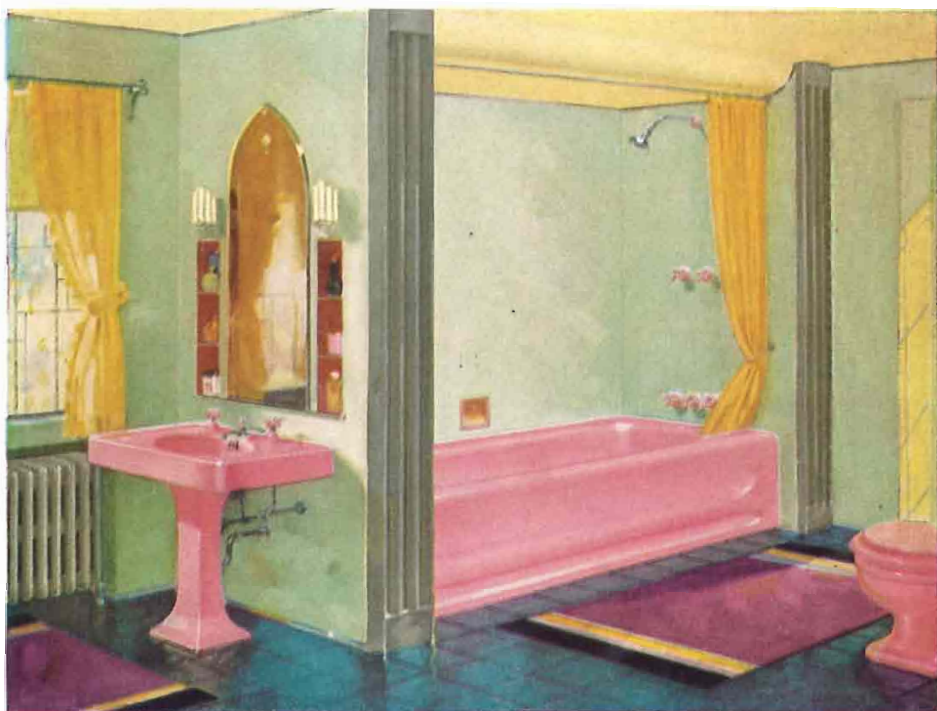
The difference in cost of an uncomfortably small bathroom and one of comfortable size, is astonishingly little. The bathrooms shown in this book are all capable of easy installation, all contain suggestions for your own bathroom problems, all offer distinctive features.

Prices for the Fixtures in this Bathroom:

	IN COLOR	IN WHITE
PEMBROKE Bath, P 2315 B, 6 ft. (with white duck curtain).....	\$199.55	\$167.15
PENWOOD Lavatory, F 128 G, 27X22 in.	98.40	73.40
MADERA Closet, F 2102.....	79.50	56.60
Total	\$377.45	\$297.15
(Ionian Black enameled fixtures are made in A-R Enamel only), Add ..	\$ 27.90

(Colored shower curtains additional in price. Ask your Plumber)





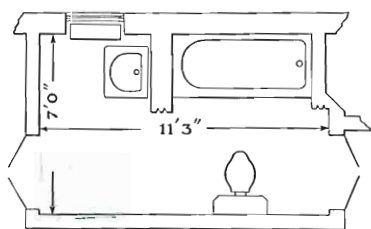
THE ROSE DU BARRY BATHROOM

Rose du Barry,—the name was given by the makers of the famous old Sevres ware to their most beautiful color in honor of Madam du Barry, who was the favorite of both Louis XV and Louis XVI of France. This historic color has been recreated in plumbing fixtures by the master colorists of "Standard".

In this bathroom design, Rose du Barry is the dominant note of a color scheme which, while adding very little to the cost, makes possible a distinctive bathroom. The comparative prices of the bath, lavatory and water closet in color and in white are listed. These prices reveal the fact that the distinction of color in "Standard" Plumbing Fixtures is not costly.

The bathroom illustrated on this page is an example of the individuality which can be achieved when the home owner and the architect give the bathroom as much consideration as an interior, as the other rooms of the home.

Prices for the Fixtures in this Bathroom:



	IN COLOR	IN WHITE
PEMBROKE Bath, P 2315 B, 5 1/2 ft., (with white duck curtain)	\$129.15	\$110.60
LATON Lavatory, P 3117 G— 24 x 20 inches	59.55	51.50
MASTER DEVORO Closet—F 2035	112.00	89.00
Total	\$300.70	\$251.10
(Enameled fixtures in Ionian Black made in A-R Enamel only). Add	\$ 19.65

(Colored shower curtains are additional in price.
Ask your Plumber)





THE IVOIRE DE MEDICI BATHROOM

Ivoire de Medici, the mellow tint of old ivory, was first accomplished by Italian potters who worked under the patronage of the famous de Medici family of Florence.

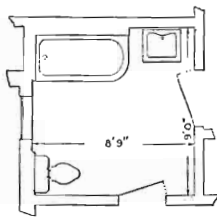
In this bathroom design the beauty of the old ivory of the corner Pembroke Bath, the Blackford Vitreous China Lavatory and Madera Water Closet, with open front seat, is brought out fully by the contrasting peach colored walls, the blue of the floor and the green of the curtains.

Color in plumbing fixtures is not costly—in fact it is but a small part of the total cost of any bathroom. Used correctly it is by far the most economical means of attaining individuality in bathroom furnishing and decoration. In originating the color composition, keep in mind the value of simplicity. The starting point should be the selection of the color for the plumbing fixtures. That is the key color. Then you can select colors for the walls, floor and draperies which will contrast harmoniously with the color of the plumbing fixtures.

Prices for the Fixtures in this Bathroom:

	IN COLOR	IN WHITE
PEMBROKE Bath, P 2312 E, 5 ft., (with white duck curtain)	\$132.20	\$113.85
BLACKFORD Lavatory, F 117 HS, 24 x 20 inches	88.00	66.35
MADERA Closet, F 2102 (open front seat)	79.50	55.85
Total	\$299.70	\$236.05
(Ionian Black enameled fixtures are made in A-R Enamel only). If in Black, add	\$ 14.75

(Colored shower curtains are additional in price. Ask your Plumber)





THE CLAIR DE LUNE BLUE BATHROOM

Clair de Lune as a name was first used by the French to describe a Chinese porcelain, the color of which is as delicate as the "light of the moon".

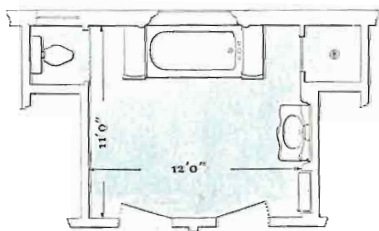
In this bathroom design which is both original and practical, the Clair de Lune of the plumbing fixtures is complemented by the beige of the walls, the blue-green of the floor and the gold of the faucets and shower door.

This room illustrates clearly the possibilities which the modern conception of the bathroom, *as an interior*, will permit in decorative treatment. It is an ideal bathroom to serve two adjoining bedrooms, as it includes a bath and a separate shower allowing the use of that type bath which best suits the bather's preference. The bath is a Royalton, the lavatory a Templeton, the water-closet an Ariston.

To be practical for bathroom use, materials which surround the bath and shower must be waterproofed, but the balance of the room can be attractively painted or decorated in beautiful non-waterproof materials.

Prices for Fixtures in this Bathroom:

	IN COLOR	IN WHITE
ROYALTON Bath—P 2370 G (Finish G) 5½ ft. (A-R Enam.)	\$346.95	\$304.95
TEMPLETON Lavatory—F 51 G (Finish G) 36 x 20 in.	680.00	590.00
ARISTON Closet—F 2015.....	166.00	135.00
K 113 (Finish G) Shower, 38 x 38 in. A-R Enameled receptor (less door)	368.90	350.50
Price of plate glass shower door with gold-plated frame.....	(on application)	
Total	\$1561.85	\$1380.45





THE T'ANG RED BATHROOM

T'ang Red,—a color of rich beauty originated by the master potters of the great T'ang Dynasty which governed China from 618 to 907 A. D.

For all its individuality this bathroom is easy and economical to build. The architect has changed the whole appearance of the rectangular shape of the room by using one corner as an alcove for the water-closet and the opposite corner for a convenient built-in closet. The bath is placed in the recess formed by these two cut-off corners, and is further distinguished by the use of waterproofed composition board in the back, bearing a novel sand-blasted design.

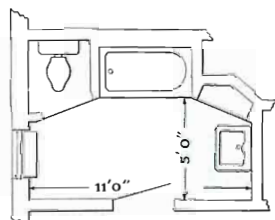
The rich color of the plumbing fixtures—Pembroke Bath, Brainard Lavatory and Madera Water-closet,—contrasts harmoniously with the lemon yellow of the walls, the steel blue of the floor and the gold of the shower and window curtains.

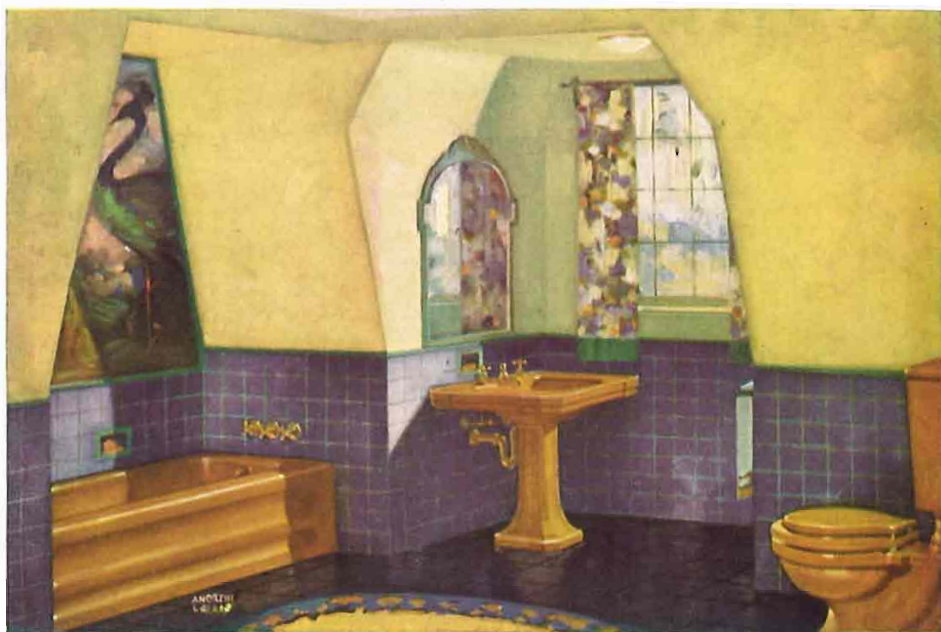
So much beauty and comfort may be accomplished by foresighted planning and well-informed selection! It costs no more to have a color scheme that is harmonious than one that is inharmonious. And "Standard" Plumbing Fixtures, for all their beauty of line and proportion, are not higher priced than others.

Prices for the Fixtures in this Bathroom:

	IN COLOR	IN WHITE
PEMBROKE Bath—P 2317 B—4½ ft. (with white duck shower curtain)....	\$122.70	\$105.35
BRAINARD Lavatory, F 100G, 27 x 22 in..	113.50	83.90
MADERA Closet—F 2102.....	79.50	56.60
Total.....	\$315.70	\$245.85
(Ionian Black enameled fixtures are made in A-R Enamel only), Add....	\$ 12.85

(Colored shower curtains additional in price. Ask your Plumber)





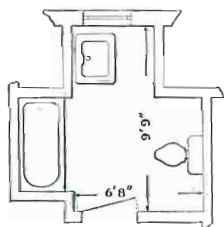
THE ST. PORCHAIRE BROWN BATHROOM

St. Porchaire Brown,—this color of rare beauty was originated in the time of Henry II of France. Today not more than sixty-five pieces of original St. Porchaire China are preserved in the private museums. In this bathroom design the St. Porchaire Brown of the Pembroke Bath, Brainard Lavatory and Devoro Water Closet is combined most effectively with plum color and golden ochre. The fittings have china parts in the same color as the plumbing fixtures. A hand painted or special design wall paper panel over the bath adds an individual touch that makes this room design unusually attractive.

The design of this room shows how a half-story room with a dormer window may be converted into an extra bathroom. And the present-day family, with its knowledge of the value of personal cleanliness, demands the extra bathroom. This space, often unused, can be utilized to no better advantage.

Real distinction can be had, even here, at no great expense. And no improvement you can make in your home will add more to its desirability and sale value.

The installation of "Standard" Plumbing Fixtures, frequently on deferred payments, has enabled many owners to command a better price or to secure more desirable tenants. The details of this plan are given on page 58.



Prices for the Fixtures in this Bathroom:

	IN COLOR	IN WHITE
PEMBROKE Bath, P 2315 J, 5½ ft.....	\$ 99.20	\$ 82.45
BRAINARD Lavatory, F 100 G, 30 x 24 inches	148.55	107.25
DEVORO Closet, F 2122.....	70.35	49.00
Total.....	\$318.10	\$238.70
(Enameled fixtures in Ionian Black are made in A-R Enamel only). Add	\$ 14.05





THE IONIAN BLACK BATHROOM

Ionian Black,—the name was inspired by the remarkable pottery produced by the early Greeks. Strictly defined, black is the entire absence of color. But black must be considered as a color when it is used in a decorative scheme. How beautiful it can be when it is combined with Chinese Red, gold, green-black, and gray, is illustrated in this bathroom design.

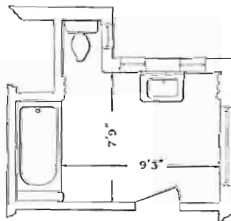
The hand of the architect shows itself plainly in this design. The unusual placing of the plumbing fixtures, with the Pemberton Lavatory and the high mirror between the windows, the bath in a pillared recess, and the water closet in an alcove, makes for interest as well as convenience.

The lines of the massive Woodmere Bath and of the Pemberton Lavatory are in perfect harmony with the modern architectural treatment of the room. The lighting arrangement over the bath, in which the light comes through a plate of frosted glass over the alcove, is an indication of the unusualness in modern bathroom decorative treatment.

It is not expected that the bathroom designs illustrated will be copied in detail. They are put forward as suggestions which disclose some of the possibilities of bathroom decoration and help you to plan a better bathroom with an individual and beautiful color scheme.

Prices for the Fixtures in this Bathroom:

	IN COLOR	IN WHITE
WOODMERE Bath, P 2390 J (Finish G), 5 1/2 ft. (A-R Enamel).....	\$269.70	\$237.00
PEMBERTON Lavatory, F 61 G (Finish G), 30 x 21 inches.....	615.00	550.00
PURIMO Closet, F 2005.....	124.00	99.00
Total.....	\$1008.70	\$886.00





THE ROYAL COPENHAGEN BLUE BATHROOM

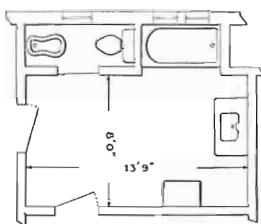
Royal Copenhagen Blue,—this color, more than any other, has contributed to the fame of Denmark's pottery. In "Standard" plumbing fixtures it becomes the inspiration for a bathroom design of unusual charm and individuality.

Note especially the exceptional size and graceful lines of the lavatory. This is the Chesterton model with a top forty-two inches long. This unusual length provides convenient space for toiletries, and the wide set legs of the lavatory permit the dressing bench to be drawn up close.

It is easy to imagine this bathroom in a remodeled house of Colonial style. The problem of having both the windows and the shower is solved simply by using the same waterproof material in the window curtains as in the shower curtain.

Shown on the floor plan is a Bidet. This fixture, which provides a rectal or vaginal douche, is illustrated in your Plumber's catalogue. It is used in fine homes in Europe and South America, and should be included in every bathroom where utmost convenience is desired.

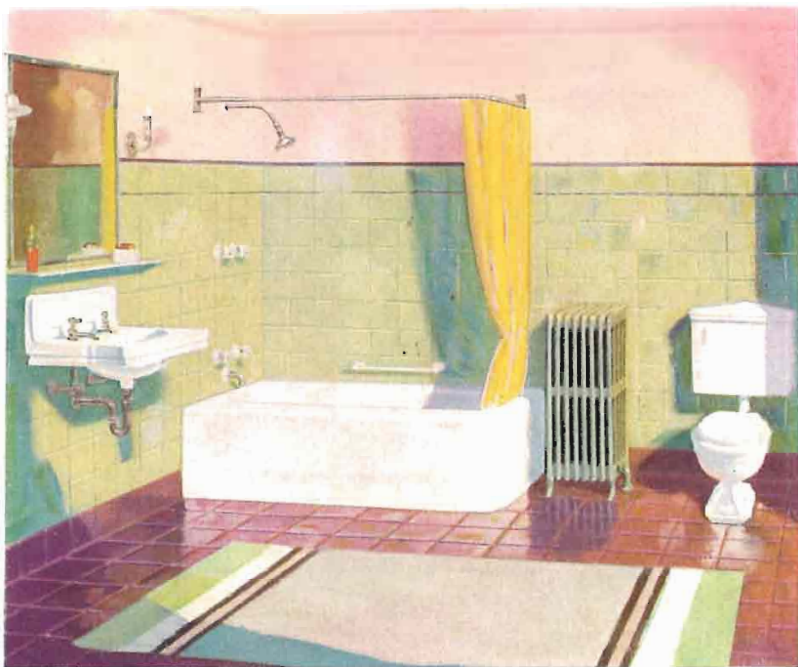
Prices for the Fixtures in this Bathroom:



	IN COLOR	IN WHITE
PEMBROKE Bath—P 2315 A (Finish X)— 5 ft., (with white duck curtain).	\$199.95	\$187.10
CHESTERTON Lavatory—F 80 G (Finish X) (42 x 22 inches)	375.00	300.00
DARLINGTON Dressing Table—F 86 (Finish X)	150.00	130.00
DEVORO Closet—F 2122	70.35	49.75
BIDET—F 5000	113.75	102.50
Total	\$909.05	\$769.35
(Ionian Black enameled fixtures are made in A-R Enamel only), Add	\$ 12.85

(Colored shower curtains additional in price. Ask your Plumber)





AN ECONOMICAL WHITE FIXTURE BATHROOM

White—the color which traditionally has been the expression of cleanliness and until recently almost the only color in which plumbing fixtures were made—will always be preferred by some home owners.

And white can be as distinctive as color—when it is used as a color and correctly combined with other colors. All too frequently white, simply because it denotes cleanliness, has been the only color in the bathroom—white fixtures, white walls, white ceiling. But white is too striking to be used without relief, and the all-white is the exception rather than the rule.

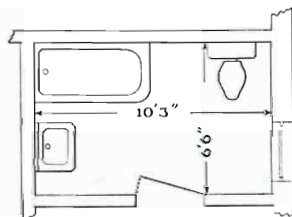
Whether you prefer plumbing fixtures of white or color remember that the function of the background is to provide the contrast which will bring out the beauty of the fixtures. It is a mistake to try to match the color of the fixtures in the wall material. The all-green, rose, orchid or blue bathroom will be no more distinguished than the all-white bathrooms of the past.

In this bathroom the green of the walls and tile-red of the floor provide the contrast which enhances the simple and graceful lines of the plumbing fixtures.

Prices for the Fixtures in this Bathroom:

	IN COLOR	IN WHITE
PEMBROKE Bath—P 2312 E—5 ft., (with white duck curtain)	\$132.20	\$113.85
LUCERNE Lavatory—F 367, 24 x 20 inches, (with single faucets as shown and with rubber stopper)	65.30	48.35
MADBROOK Closet—F 2143	73.45	49.50
Total	\$270.95	\$211.70
(Ionian Black enameled fixtures are made in A-R Enamel only), Add	\$ 14.75	

(Colored shower curtains additional in price. Ask your Plumber)



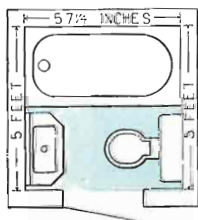


THE FIVE FOOT SQUARE BATHROOM

Have you long wanted a second bathroom and wondered where you could find the space for it? Then consider this beautiful bathroom—installed in a space five feet square!

There are other groups of "Standard" Plumbing Fixtures than those shown here, which will fit nicely into this space and cost less. See the Recona Bath on page 29, the Marcosa Lavatory on page 19, and the Siacto Water Closet on page 38. Your plumbing contractor will be glad to suggest other groups.

An unused closet or hall end, can oftimes be converted into the extra bathroom you would like so much to have. With a cheerful color scheme, well selected wall and floor materials, and "Standard" Plumbing Fixtures, the small extra bathroom can be as distinctive as it is convenient.



Prices for the Fixtures in this Bathroom:

	IN COLOR	IN WHITE
PEMBROKE Bath, P 2317 A (Finish X), 5 ft., (with white duck curtain).....	\$189.65	\$176.80
MARLTON Lavatory, F 315 G (Finish X).....	109.00	95.00
MASTER DEVORO Closet, F 2035.....	112.00	89.00
Total	\$410.65	\$360.80
(Ionian Black enameled fixtures made in A-R Enamel only). If in Black, add.....	\$ 12.85

(Colored shower curtains are additional in price. Ask your Plumber)





A DISTINCTIVE WHITE FIXTURE BATHROOM

Imagine your bathroom with new "Standard" Plumbing Fixtures—a roomy, comfortable bath that is easy to keep clean and bright, a pedestal type lavatory, a quiet, efficient water closet of the syphon-jet type.

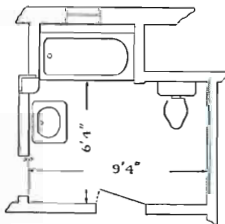
Perhaps you would like a built-in mirror, a leaded glass window and shelves in a space-saving arrangement like those shown in the illustration. At last you would have a bathroom worthy of your home, a bathroom that you would be glad to have your guests see.

If you prefer you can install these plumbing fixtures and modernize your bathroom on easy monthly payments. Just ask your plumbing contractor, or consult a "Standard" Showroom representative.

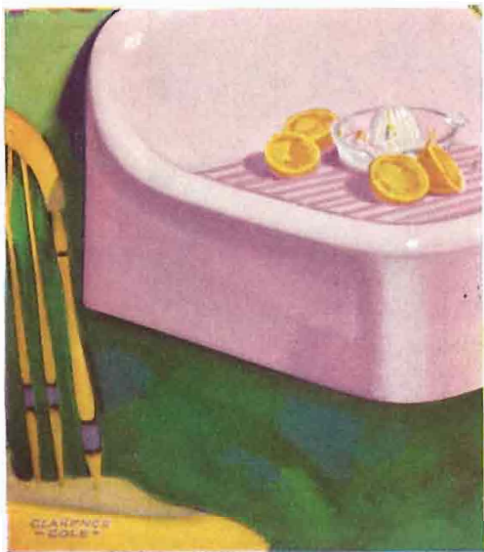
Not only the cost of the plumbing fixtures, but the charge for installing them, the materials for remodeling the room, and the necessary work can be financed by means of the "Standard" Time Payment Plan. For further information about this simple, convenient plan see page 58.

Prices for the Fixtures in this Bathroom:

	IN COLOR	IN WHITE
PEMBROKE Bath, P 2317 J, 5 ft.....	\$ 93.30	\$ 77.75
LATON Lavatory, P 3117 G, 24 x 20 inches....	59.55	51.50
SIACLO Closet, F 2148.....	63.35	40.95
Total.....	\$216.20	\$170.20
(Ionian Black enameled fixtures made in A-R Enamel only). If in Black, add.....	\$ 18.45



A MORE DURABLE AND BEAUTIFUL ENAMEL FOR PLUMBING FIXTURES



One of the most important improvements ever made in the construction of plumbing fixtures is Acid-Resisting Enamel. It was developed and perfected by the chemists of the Standard Sanitary Mfg. Co.

Fruit and vegetable acids do not roughen or discolor plumbing fixtures made of Acid-Resisting Enamel. It has superior durability and permanency of gloss. Not even the acids used by tile setters can mar its smooth, glass-like surface.

Acid-Resisting Enamel is easy to clean and to keep clean. With a minimum of care it stays spotless and bright. Due to its unusual durability, Acid-Resisting Enamel is

being widely specified for homes, hospitals and hotels.

Although the first cost of plumbing fixtures made of Acid-Resisting Enamel is slightly more, the replacement expense it eliminates and the longer life and beauty it gives to the fixtures, result in an appreciable saving. "Standard" Acid-Resisting Enamel is identified by the trade mark—"Standard" A-R, which is a permanent mark in every fixture made of this material.

All enameled plumbing fixtures shown in this book can be obtained in Acid-Resisting Enamel. The same fixtures, with the few exceptions noted, are also available in regular enamel.

A MORE DURABLE AND BEAUTIFUL FINISH FOR FITTINGS

Chromard is the name used to describe the Standard Sanitary Mfg. Co.'s process of plating brass with chromium and to describe the plating itself. Chromard is more durable than nickel plating and has a distinctive silver-like sheen.

Chromard does not tarnish or corrode even when exposed to unusually severe conditions. Unlike silver and nickel, it requires no polishing. Washing with a damp cloth restores its gleaming brightness. With ordinary care this new finish will retain its beauty indefinitely.

All "Standard" fittings are available with the exposed metal parts finished in Chromard. Chromard Finish costs but little more than nickel plating, in fact, the difference is so slight and the advantages so much greater, that Chromard is rapidly displacing nickel.

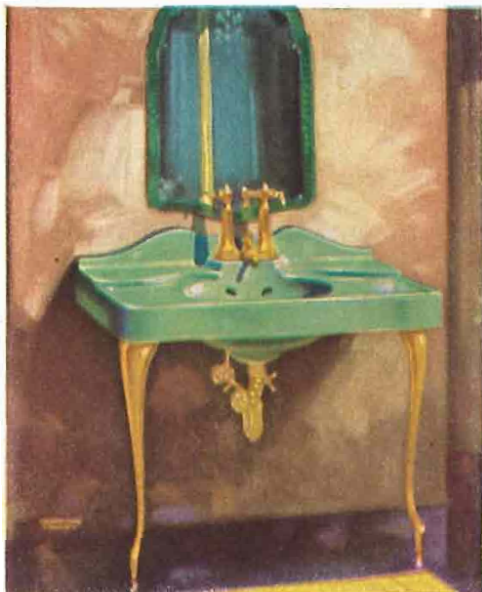


"Standard" LAVATORIES

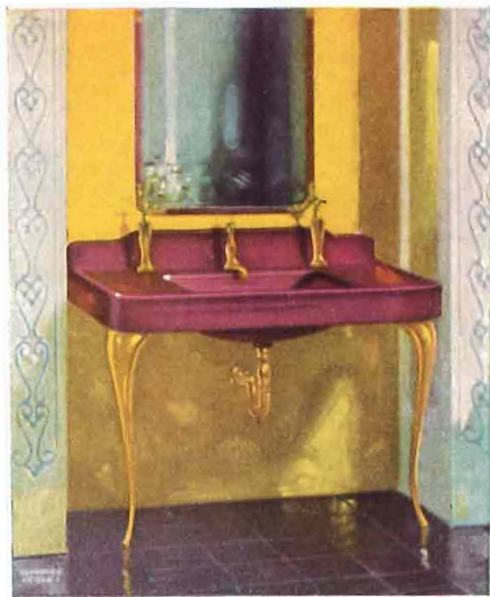
"Standard" styled lavatories—the Templeton, Pemberton, Chesterton and Castleton—represent a new and wholly different type of beauty in bathroom fixtures.

Created by "Standard" designers, fired in vitreous china of attractive sparkling color or in white, with graceful fittings comparable to hand-wrought jewelry, these lavatories have made the modern bathroom a practical possibility. They contribute a note of assured distinction equally as well to the most luxurious bathroom and to the bathroom representing careful expenditure.

The Templeton and Pemberton are each fired in a single piece of genuine vitreous china, each has a spacious top for toiletries, each is designed to give a full measure of practical service as well as contribute to the beauty and individuality of the bathroom. The especially designed Mastercraft fittings may be of Chromard or gold plate, smooth or hand-hammered, as described below.



Templeton - F 51 G (Finish G)



Pemberton - F 61 G (Finish G)

PRICES AND SIZES:

	30 x 20 in.	36 x 20 in.
IN COLOR		
F 51 G (Finish X)	\$455.00	\$520.00
F 51 G (Finish X H)	565.00	630.00
F 51 G (Finish G)	615.00	680.00
IN WHITE		
F 51 G (Finish X)	390.00	430.00
F 51 G (Finish X H)	500.00	540.00
F 51 G (Finish G)	550.00	590.00
IN COLOR		
F 61 G (Finish X)	455.00	520.00
F 61 G (Finish X H)	565.00	630.00
F 61 G (Finish G)	615.00	680.00
IN WHITE		
F 61 G (Finish X)	390.00	430.00
F 61 G (Finish X H)	500.00	540.00
F 61 G (Finish G)	550.00	590.00

For complete list of finishes of Mastercraft fittings, see inside of Back Cover. A straight line design fitting is also available for the Pemberton. Consult your Plumber for information about it, and for prices on the other finishes of fittings

The Chesterton - The Darlington

The tendency to use the bathroom as a dressing-room, as a solarium, with the new health-bringing window glass that admits the ultra-violet ray, as a lounge room or a boudoir—now offers unlimited opportunity for the development of original and striking arrangements. A smart note is the combination of the en suite lavatory and dressing table.

If you are seeking something new and interesting in fixture arrangement—something as convenient as it is attractive—what will serve the purpose better than the installation of the Chesterton Lavatory and the Darlington Dressing Table? Of identical design, they can be used even in a room of moderate dimensions, to produce a truly individual bathroom.

The Chesterton in the regular sizes is illustrated on this page. Shown in the bathroom on page 10 is the Chesterton in a 42-inch width, a remarkable achievement in vitreous china. Its beauty is comparable to that of lavatories made of marble or other materials, which are not cast in one piece and must have a cemented bowl.

The Chesterton is fired in a single piece of genuine vitreous china, is wholly impervious to moisture or stain, and is as sanitary as it is beautiful.



Chesterton - F 80 G (Finish G)



Darlington - F 86 (Finish G)

PRICES AND SIZES:

	27 X 22 in.	30 X 24 in.	42 X 24 in.
	IN COLOR		
F 80 G (Finish X)	\$194.00	\$214.00	\$375.00
F 80 G (Finish G)	302.35	322.35	483.40
	IN WHITE		
F 80 G (Finish X)	\$175.00	\$188.00	\$300.00
F 80 G (Finish G)	283.40	296.40	408.40
	30 X 18 in.		
	IN COLOR		IN WHITE
F 86 (Finish X)	\$150.00		\$130.00
F 86 (Finish G)	235.00		215.00

(For complete list of finishes for Mastercraft fittings, see Inside Back Cover)





The
Broadmore



The
Castleton



The
Brainard

Broadmore - F 84 G (Finish X)

Expressing a new idea in lavatory design is the Broadmore, a double-bowl lavatory of vitreous china, with metal legs and with Mastercraft fittings for each bowl.

This type of fixture, two complete lavatories on the one set of legs, is in popular favor in many luxurious European homes and world-famous hotels, and will add a fine touch of the Continental to American homes in which something distinctive is desired. It is ideal for toilet rooms, for a bedroom installation, and for bathrooms of original design.

The Castleton, a beautiful dressing table type lavatory, is shown in color in the bathroom on page 2. The fitting has spout, handles and lift knob for the drain all on the single body. The Brainard, a pedestal type of excellent paneled design, is shown here with Chromard Finish fittings having china handles and escutcheons. It is illustrated in color on the cover and on pages 7 and 8.



Castleton - F 71 G (Finish X)



Brainard - F 100 G

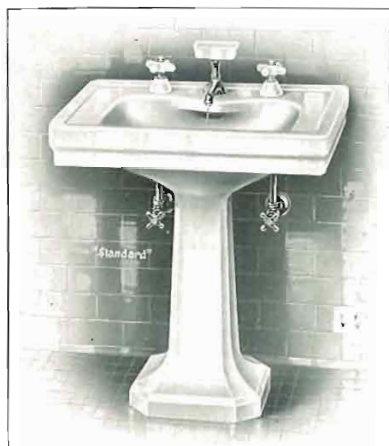
PRICES AND SIZES:

	IN COLOR		IN WHITE	
	30 X 22 in.	48 X 22 in.	30 X 22 in.	48 X 22 in.
F 71 G (Finish X)	\$280.00	\$240.00
F 71 G (Finish G)	425.00	385.00
F 84 G (Finish X)	\$495.00	\$410.00
F 84 G (Finish G)	625.00	540.00
	27 X 22 in.	30 X 24 in.	27 X 22 in.	30 X 24 in.
F 100 G.....	\$113.50	\$148.55	\$ 83.90	\$107.25
F 100 G (Finish X)	142.70	177.75	115.55	138.90

(Prices are for fixtures and fittings only)



Blackford - F 117 H S



Penwood - F 128 G



Randall - F 270 G



Madenta - F 571

Pedestal types of china lavatories have become the ideal fixtures for practically every medium cost bathroom. Shown here are three styles, two with a pedestal of pleasing octagonal lines and with sturdy base, the other with a vitreous china leg and with wall hangers.

All "Standard" pedestal lavatories have the pedestals fitted to their individual bowl at the factory, thereby assuring a firm and level installation.

The Penwood is supplied through an integral spout, cast as a part of the bowl. The Blackford and Randall have single metal spouts. All can supply hot, cold, or tempered water.

The Madenta dental lavatory fills the need of correctly planned bathrooms for a separate fixture for cleaning the teeth. The valves supply tempered water through the spout at the top.

PRICES AND SIZES.

(With Chromard Fittings)	IN COLOR	IN WHITE
F 117 H S —		
24 x 20 in.....	\$ 88.00	\$ 66.35
27 x 22 in.....	97.85	72.90
30 x 24 in.....	130.10	94.40
F 128 G —		
24 x 20 in.....	88.55	66.85
27 x 22 in.....	98.40	73.40
30 x 24 in.....	130.65	94.90
F 270 G —		
20 x 18 in.....	68.55	53.95
24 x 20 in.....	89.55	67.95
F 571 —		
14 x 13 in...	55.55	44.30





Marlton - F 315 G (Finish X)

Here is an excellent group of china wall hanging lavatories. The Marlton is a high quality fixture for small, but distinctive bathrooms. It is furnished with Mastercraft fittings of special design. The Marcosa, also designed as a space-saver, is more economical in cost.

The Lucerne can be had as shown above or with faucets supplying the lavatory with hot and cold water separately, as illustrated and priced in the bathroom on page 11. The Carmen is ideal for the bathroom which requires beauty with economy. All these lavatories are available in white or any "Standard" color.

"Standard" Vitreous China lavatories will not stain or craze, are impervious to moisture, and are readily cleaned with a damp cloth. The lavatories shown in this book, and many more shown in your Plumber's catalogue, offer a complete variety of styles. The prices listed include the fittings as described, plated cast brass trap and supply pipes with shut-off valves.

PRICES AND SIZES:

(With Chromard Fittings)	IN COLOR	IN WHITE
F 315 G (Finish X)—		
26 x 14 in.	\$109.00	\$ 95.00
F 319 R Z —		
20 x 13½ in.	40.45	31.80
26 x 14 in.	44.20	34.05
F 367 G —		
18 x 15 in.	55.15	44.45
20 x 18 in.	59.45	47.85
24 x 20 in.	80.45	61.85
F 377 W Z —		
18 x 15 in.	40.55	31.50
20 x 18 in.	44.30	34.35

Lucerne - F 367 G



Marcosa - F 319 R Z



Carmen - F 377 W Z

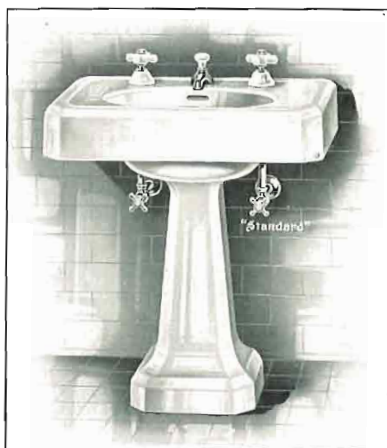


ENAMELED LAVATORIES

"Standard" Enameled Lavatories, like those of vitreous china, are made in a wide variety of designs and prices. Those shown in this book are representative of the more frequently specified styles.

"Standard" enameled lavatories are economical in cost, are pleasing in design and are made to give years of excellent service. They can be had with regular enamel in white and in the "Standard" colors except Ionian Black, or in Acid-Resisting Enamel in white and all the nine "Standard" colors.

Your Plumber's catalogue illustrates an extensive variety of other designs, not shown here, which permits you to select the exact fixture to meet your needs.



Clyde - P 3127 G



Laton - P 3117 G



Laton - P 3117 E Z

Shown on this page are the popular Clyde and Laton pedestal types. The Clyde is a modern design lavatory of unusually attractive lines. It has the efficient "York" type fitting, with separate valves supplying hot, cold, or tempered water through a single spout. The lift knob over the spout controls the metal stopper of the drain.

This fitting is a sanitary one, as it allows the washing of the hands in running tempered water. An integral cast-in overflow prevents the bowl from running over.

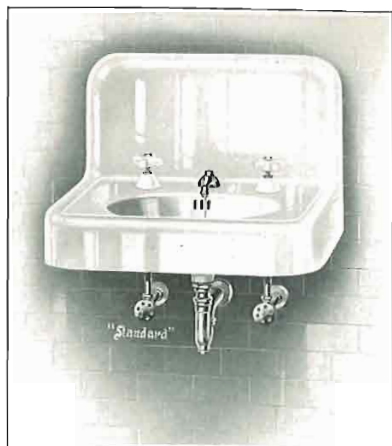
The Laton, the most popular style of pedestal enameled lavatory, can be had either with the "York" fitting, or with two single faucets and with a chain and rubber drain stopper, as shown, or with several other fitting styles shown in your Plumber's catalogue.

PRICES AND SIZES:

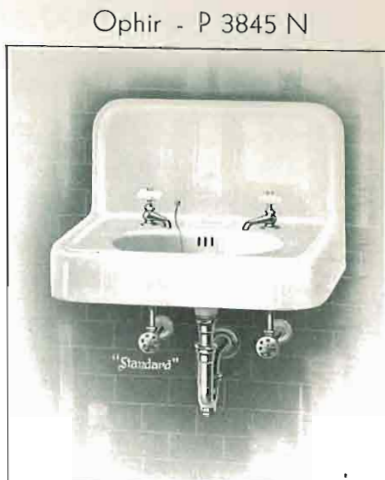
(With Chromard Finish Fittings)	24 x 20 in.	27 x 22 in.	30 x 22 in.
P 3117 E Z—			
In Color.....	\$ 48.25	\$ 61.40	\$ 74.25
In White.....	41.55	52.05	62.35
P 3117 G—			
In Color.....	59.55	72.70	85.55
In White.....	51.50	62.00	72.30
P 3127 G—			
In Color.....	71.00	76.20
In White.....	60.65	64.80

NOTE—All "Standard" enameled fixtures in Ionian Black are furnished in Acid-Resisting Enamel only, at approximately 25% additional to the color prices shown. Consult your Plumber for exact prices. All other enameled fixtures in this book, both in white and color, are priced with regular enamel only, unless otherwise noted.





Ophir - P 3847 H



Ophir - P 3845 N

Hundreds of thousands of these types of "Standard" lavatories have been installed in homes in all parts of the world. Of wall-hanging design, well supported on strong cast-iron hangers, they are of ample size for convenience and are most economical in cost.

The same care is given in molding and in enameling these lavatories as is given the finest colored pedestal lavatory or bath.

Fittings illustrated are—the single spout type, supplied with hot, cold, or tempered water by two separate valves and which has a rubber stopper; the fitting which has single faucets with rubber drain stopper (this type is shown with both china and metal handles on the faucets); and the fitting composed of single faucets with a lift drain and metal stopper. Prices for the fixtures include the trap, supply pipes and shut-off valves under the lavatories. Each lavatory has a cast-in overflow with an integral enameled grid.



Othello - P 4205 R



Othello - P 4207 R

PRICES AND SIZES*

(With Chromard Fittings)	IN COLOR	IN WHITE
P 3845 N—		
21 x 17 in.	\$ 30.75	\$ 27.15
24 x 18 in.	33.65	29.50
P 3847 H—		
24 x 20 in.	53.10	46.40
27 x 22 in.	69.05	59.15
P 4205 R—		
19 x 17 in.	27.00	24.60
21 x 18 in.	28.75	26.00
P 4207 R—		
21 x 18 in.	34.45	31.25

(For prices of enameled fixtures in Ionian Black, see Note, page 20)



Anglo - P 4955 N



Marco - P 4219 T Z



Beverly - P 4335 R



Alva - P 4365 R

These lavatories have been designed for the modest home, in which comfort, economy of cost and long service are more important than individuality of design, or in which the space for the bathroom is very limited.

The Anglo is particularly suitable for use as a bedroom lavatory, as it can be placed in a corner. The Marco is a space-saving design.

Yet, inexpensive as these lavatories are, they represent the very highest in quality. Careful workmanship and the best in materials, both for the fixture and the brass fittings, assure a greater dollar for dollar value in all "Standard" lavatories than any others.

Many Plumbers have their own display rooms, in which are shown as complete a selection of "Standard" Plumbing Fixtures as the space allows. As a consequence, you can see many of the lavatories and other fixtures shown in this book, in your own neighborhood at the shop of your selected dealer.

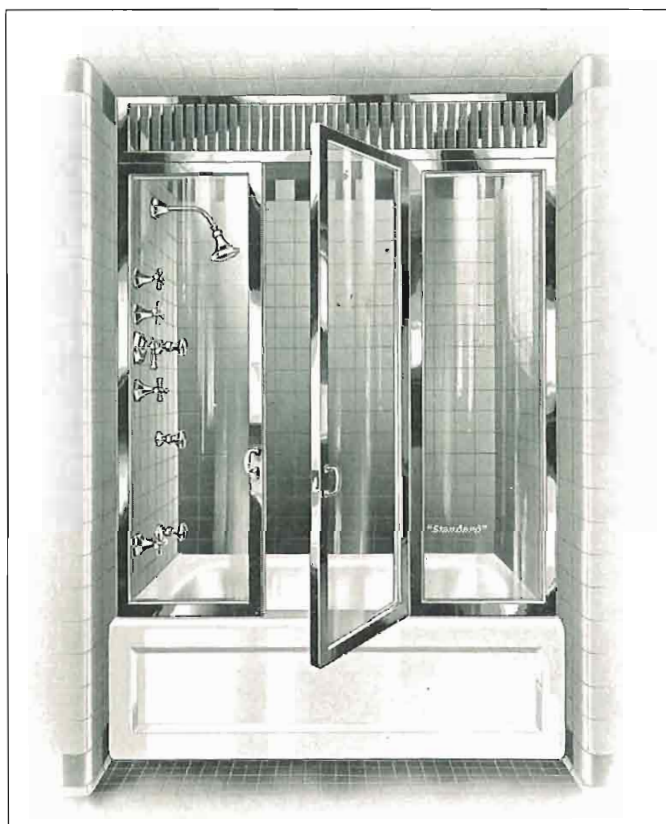
PRICES AND SIZES:

(With Chromard Fittings)	IN COLOR	IN WHITE
P 4219 T Z —		
26 x 14 in.....	\$40.80	\$35.80
P 4365 R —		
14 x 16 in.....	25.70	23.55
P 4335 R —		
19 x 17 in.....	25.85	23.65
21 x 18 in.....	27.60	25.05
P 4955 N —		
16 x 16 in.....	34.30	30.00
19 x 19 in.....	37.30	32.40

(For prices of fixtures in Ionian Black, see Note, page 20)



"Standard" ENAMELED BATHS



Royalton - P 2377 X (Finish X)

For nearly fifty years the mark "Standard" on bath-tubs has denoted the very best in quality, style and convenience. "Standard" pioneered the development of the cast iron enameled leg type bath, the built-in bath with the single front wall and that having the outside apron, and is always keeping pace with the widespread desire for distinctiveness in design and greater utility.

Quality, variety in color and design, a full assortment of "Standard" fittings made expressly for "Standard" baths—these are the "Standard" assurances of a better installation.

No bath expresses the modern idea of beauty, simplicity of line and utmost convenience better than the Royalton, a bath that is a distinguished appointment in the finest bathroom. The Royalton, above, has a shower with Mastercraft fittings, including auxiliary body sprays, and has a handsome plate glass shower door with Chromard finish frame and grille.

ROYALTON — P 2377 X (Finish X) — Size 5 ½ feet — with Acid-Resisting Enamel — Mastercraft fittings and Door Frames in Chromard Finish.

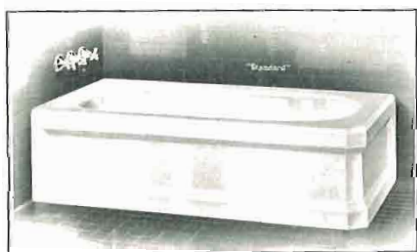
PRICES:	With Glass Doors	As shown (less doors)
IN COLOR.....	\$1108.05	\$448.50
IN WHITE.....	1066.05	406.50



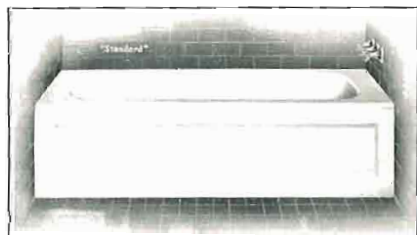


Royalton - P 2360 G (Finish X)

The straight lines of rim and panel and the massive construction of the Royalton, are in keeping with the straight line simplicity typical of the modern architectural designs. All models of this bath are 36 inches wide and 5½ feet in length.



Royalton - P 2367 G (Finish X)



Royalton - P 2372 J (Finish X)

"Standard" bath designs are available for practically any installation condition. If they are not shown in this book, consult your Plumber for illustrations and prices.

The models illustrated are available for opposite corners or outlets. P 2360 G, for instance, is designed for right corner with a right outlet. The same design for a left corner with left outlet is designated P 2365 G.

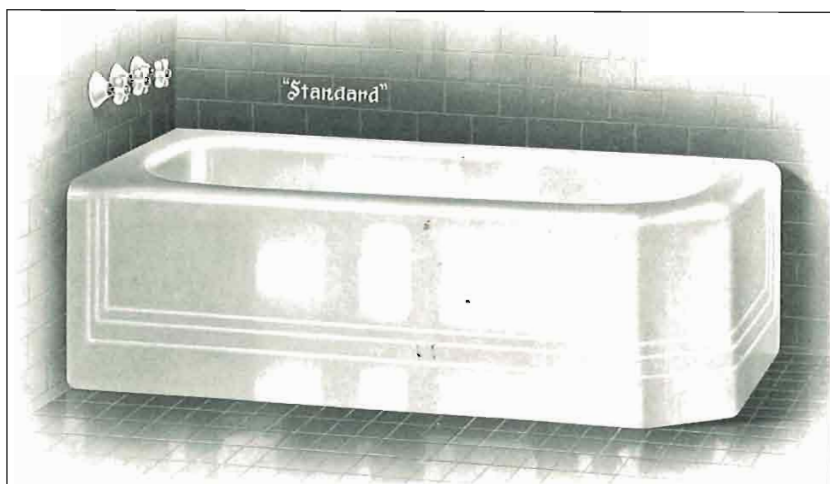
The attractive angles of the Mastercraft design fitting make it particularly appropriate for this distinctive bath. The fitting is available for either the through-the-rim style or through-the-wall for any of the Royalton designs.

The Royalton, as are all "Standard" baths, is made with the greatest care. Of highest quality materials, the extra attention given to their construction assures greater service and satisfaction. The extra skill and care in workmanship, the extra amount of iron in the casting, the extra precautions in applying the enamel, the extra demands in the inspection standards—these are part of all "Standard" production requirements, strictly observed so that you may have a superior fixture.

PRICES:

5½ ft. length—with Acid-Resisting Enamel, Mastercraft fittings in Chromard finish	IN COLOR	IN WHITE
P 2360 G (Finish X), or P 2365 G (Finish X) for left corner	\$345.45	\$299.25
P 2367 G (Finish X), or P 2362 G (Finish X) for right corner	335.55	289.35
P 2372 J (Finish X), or P 2377 J (Finish X) for left outlet	310.35	268.35





Woodmere Neo-Classic - P 2387 J

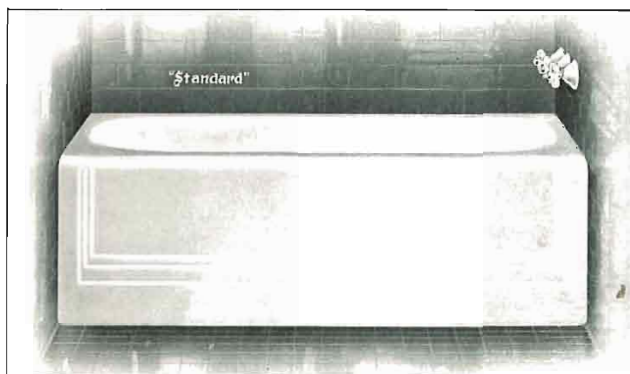
Evidencing the desire to keep pace with the demand for distinctiveness of design and greater utility, "Standard" is now offering the Woodmere Neo-Classic and the Pembroke Neo-Classic, two new attractive models of popular types of built-in enameled baths.

However interesting the architectural treatment of the bathroom, however individual its color scheme, it can only be as beautiful or as modern as its plumbing fixtures. For bathrooms of unusual character, the Woodmere Neo-Classic is an admirable fixture. It is distinguished by its unusual massiveness and its charming simplicity of design.

Shown on this page are two of the most frequently installed types of this bath.

Dimensions:

Width over-all 33 in.
Width of rim 4½ in.
Height from floor . . 17½ in.



Woodmere Neo-Classic - P 2390 J

PRICES AND SIZES:

(Regular enamel, Chromard Finish Fittings)	IN COLOR		IN WHITE	
	5 ft.	5½ ft.	5 ft.	5½ ft.
P 2387 J or P 2382 J (right corner)	\$196.25	\$205.25	\$160.10	\$167.30
(Fittings as shown)				
P 2390 J or P 2392 J (left outlet)	183.45	192.45	149.85	157.05
(For Baths shown on Page 32-B)				
P 2382 J or P 2387 J (left corner)	214.05	223.05	180.60	187.80
(Mastercraft design fittings)				
P 2390 N or P 2392 N (left outlet)	176.40	185.40	143.70	150.90

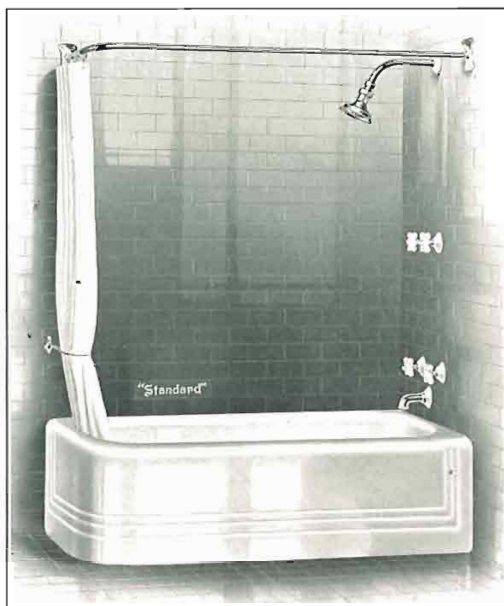
For prices of the fixtures in Ionian Black, see Note, page 20.



A "Standard" bath with a "Standard" shower is the ideal combination for bathrooms in which the space is limited. Here are two styles of the new Pembroke Neo-Classic with "Standard" bath and shower fittings which supply hot, cold or tempered water. One type has separate hot and cold water shower valves supplying an adjustable shower head, the other a mixing valve with a single handle.

The Pembroke Neo-Classic, like the more massive Woodmere Neo-Classic, is a recently developed "Standard" bath, designed to meet fully all the requirements of the present-day bathroom in which is desired a touch of modernity.

It is not bizarre, it was not developed at the inception stage of this new era in art and in home decoration. "Standard" designers have awaited the period when the extremist has developed into the rationalist who sees the need for an



Pembroke Neo-Classic, with Shower - P 2307 E

interior which, reasonably, meets the need for sensible modern treatment.

Your Plumber can show you in his catalogue a number of types of showers which can be used with every Pembroke Neo-Classic and Woodmere Neo-Classic design.

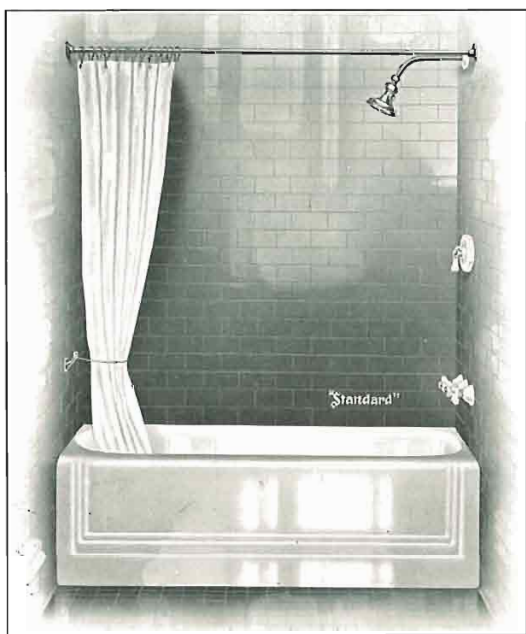
Dimensions:

Width over-all 30 inches
Width of rim 3 3/4 inches
Height from floor 17 1/2 inches

PRICES AND SIZES:

(With regular enamel—Chromard Finish Fittings)	IN COLOR	IN WHITE
P 2307 E or 4 1/2 ft.	\$132.20	\$113.85
P 2312 E 5 ft.	132.20	113.85
(left corner) 5 1/2 ft.	138.10	118.55
6 ft.	211.90	178.15
P 2315 A or 4 1/2 ft.	136.50	120.05
P 2317 A 5 ft.	136.50	120.05
(left outlet) 5 1/2 ft.	142.95	125.30
6 ft.	213.35	181.85

Prices include Chromard Finish Curtain Rod. For prices of fixtures in Ionian Black, see Note, Page 20.



Pembroke Neo-Classic, with Shower - P 2315 A





Pembroke Neo-Classic - P 2312 J

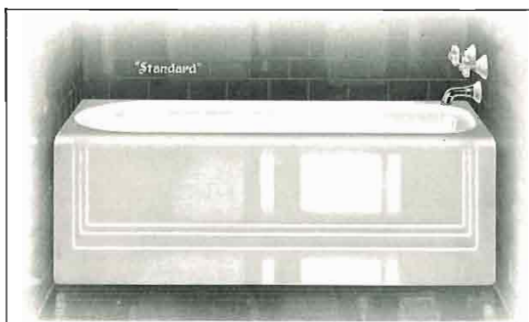
This page illustrates three styles of the Pembroke Neo-Classic, without shower. Prices for these designs and those with other types of fittings as shown on Page 32-C are given below.

All models of the Pembroke Neo-Classic can be had with outlets at opposite ends to those shown.

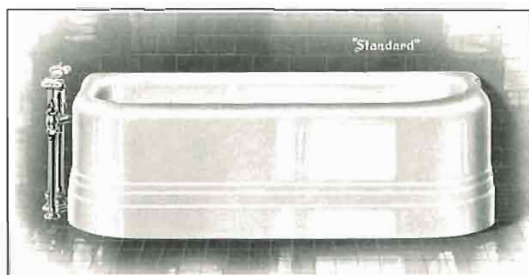
PRICES AND SIZES:

(Regular enamel— Chromard Finish Fittings)		IN COLOR	IN WHITE
P 2312 J or	4½ ft.	\$102.70	\$ 85.25
P 2307 J	5 ft.	102.70	85.25
(right corner)	5½ ft.	108.60	89.95
	6 ft.	179.65	146.80
P 2315 N or	4½ ft.	86.25	71.60
P 2317 N	5 ft.	86.25	71.60
(left outlet)	5½ ft.	92.15	76.30
	6 ft.	161.45	131.75
P 2319 J or	5 ft.	183.35	153.10
P 2321 J	5½ ft.	191.30	159.45
(right outlet)	6 ft.	206.45	171.55
(For Baths shown on Page 32-C)			
P 2310 J or	4½ ft.	112.50	96.40
P 2305 J	5 ft.	112.50	101.10
(right corner)	5½ ft.	118.40	101.10
	6 ft.	189.45	157.95
P 2317 J or	4½ ft.	93.30	77.75
P 2315 J	5 ft.	93.30	77.75
(right outlet)	5½ ft.	99.20	82.45
	6 ft.	168.50	137.90

For prices of fixtures in Ionian Black, see Note, Page 20.

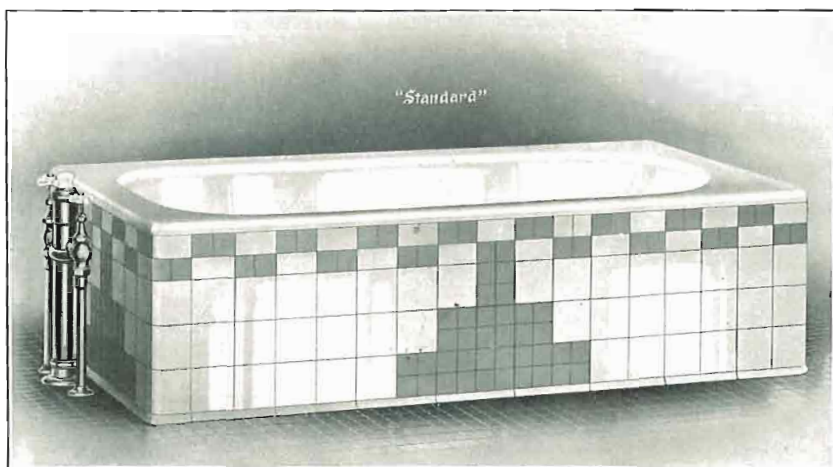


Pembroke Neo-Classic - P 2315 N

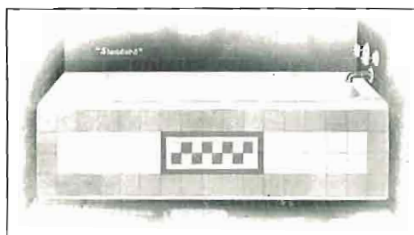


Pembroke Neo-Classic - P 2319 J

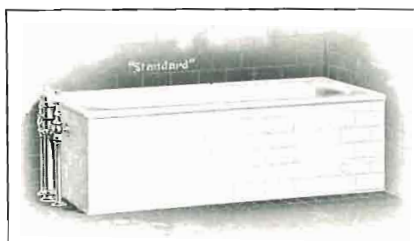




Brighton - P 2446 J



Brighton - P 2444 N



Adapto - P 2450 J

The Brighton and Adapto Baths have the body and rim cast in one piece. One, two, three or all four sides can be finished in tile, marble, vitrified glass, waterproofed composition board, or other suitable materials.

The Brighton, P 2446 J, is illustrated as a free-standing installation, that is, entirely away from the wall. It can be placed directly on the floor, or may be installed on a dais.

The Brighton and Adapto Baths are similar in design. Both have flat rims. The Brighton is 36 inches wide over-all; the Adapto 30 inches. A feature of these baths is that they can be installed as a sunken bath, flush with the floor, or raised from the floor level to any part of their full height, 17½ inches.

All "Standard" baths give more satisfactory service when they are supplied and drained by "Standard" brass fittings, made especially for them. Highest quality material, skilled workmanship, careful inspections, assure proper and satisfactory operation of these fittings.

PRICES AND SIZES:

(With regular enamel, Chromard Finish Fittings)	IN COLOR				IN WHITE			
	4½ ft.	5 ft.	5½ ft.	6 ft.	4½ ft.	5 ft.	5½ ft.	6 ft.
P 2444 N (right or left outlet).....			\$159.40				\$130.10	
P 2446 J (right or left outlet).....			176.25				147.40	
P 2450 J (right or left corner).....	\$109.55	\$109.55	117.25	\$132.75	\$94.05	\$94.05	100.20	\$112.60

(For prices of fixtures in Ionian Black, see Note, page 20)



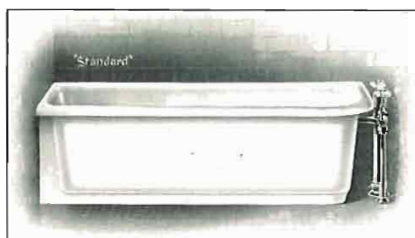


Recona - P 2483 D

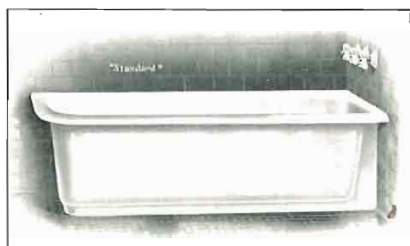
The Conred is a most serviceable bath of the single shell type. It is so designed that both sides and both ends have practically no slope, thus providing the maximum of bathing room for the space it occupies.

It represents the ultimate in space and price economy for popular types of built-in baths.

The Recona is the same design as the Conred, except that it is made for a recess. Both can be had enameled inside and painted outside, or enameled both inside and outside.



Conred - P 2460 J



Conred - P 2471 J

Dimensions—CONRED and RECONA
Width.....30 in. Height.....17 in

PRICES AND SIZES:

(With regular enamel and Chromard Finish Fittings)	IN COLOR		
	4½ ft.	5 ft.	5½ ft.
	Enameled All-over		
P 2460 J.....	\$106.60	\$106.60	\$112.50
P 2471 J.....	96.80	96.80	102.70
P 2483 D.....	71.85	71.85	77.75
	Enameled Inside Only		
P 2460 J.....	\$ 94.95	\$ 94.95	\$ 99.60
P 2471 J.....	85.15	85.15	89.80
P 2483 D.....	67.20	67.20	71.85

(With regular enamel—Chromard Finish Fittings)	IN WHITE		4½ feet		5 feet		5½ feet	
			Enam. All-over	Enam. Inside	Enam. All-over	Enam. Inside	Enam. All-over	Enam. Inside
P 2460 J, or P 2461 J (right corner).....			\$91.70	\$82.35	\$91.70	\$82.35	\$96.40	\$86.10
P 2471 J, or P 2470 J (left corner).....			80.55	71.20	80.55	71.20	85.25	74.95
P 2483 D, or P 2482 D (right outlet).....			59.50	55.75	59.50	55.75	64.20	59.50

(For prices of fixtures in Ionian Black, see Note, page 20)



What could add more to the comfort and convenience of the modest bathroom than a Conred or Recona Bath with a shower? Here is all the cleanliness of a built-in bath, the comfort of a refreshing shower, the sparkling beauty of color, at a most economical price. If you are considering a Conred or Recona Bath in color, it would be well to specify enamel inside and outside, for then the color will be uniform.

Conred and Recona Baths are available in patterns for both left and right outlets for each design shown. The Conred is designated P 2461 B J for right corner. The Recona with a left outlet is the P 2481 B.

The Conred and Recona baths, on account of their roomy and space-saving designs are especially adapted for the five-foot bathroom and those requiring careful planning for the economical use of space. And, the use of Acid-Resisting Enamel, inside and out, or inside only, will doubly assure a fixture which will remain bright and lustrous indefinitely.

All "Standard" fixtures, enameled or china, which are furnished in color and with fittings with china parts, are supplied with the handles and escutcheons in the same color.

Here, again, it is wise to insist on "Standard" fittings with "Standard" fixtures, for only in factories of the same manufacturer can a plumbing fixture color be assured of being duplicated in the fitting.

PRICES AND SIZES:

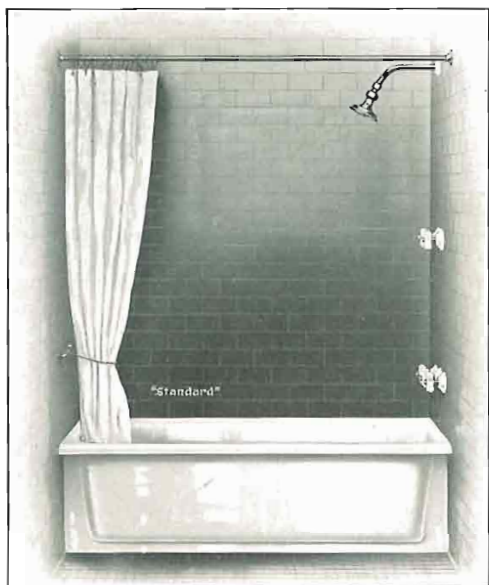
(With regular enamel—Chromard Finish fittings)

	Enameled All-over		Enameled Inside	
	P 2460 B J	P 2480 B	P 2460 B J	P 2480 B
IN COLOR				
4½ ft...	\$141.30	\$119.20	\$129.65	\$114.55
5 ft...	141.30	119.20	129.65	114.55
5½ ft...	147.20	125.65	134.30	119.75
IN WHITE				
4½ ft...	124.60	102.55	115.25	98.80
5 ft...	124.60	102.55	115.25	98.80
5½ ft...	129.30	107.80	110.00	103.10

(For prices of fixtures in Ionian Black, see Note, page 20)

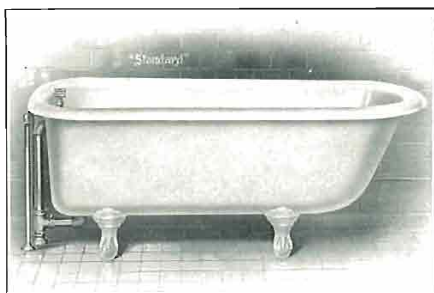


Conred - P 2460 B J

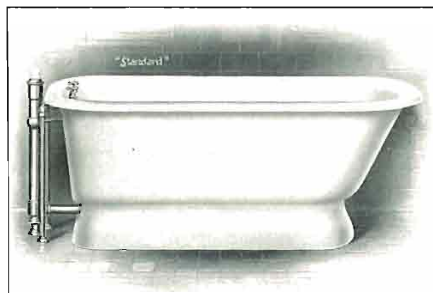


Recona - P 2480 B





Essex - P 2500 D



Essex - P 2501 F

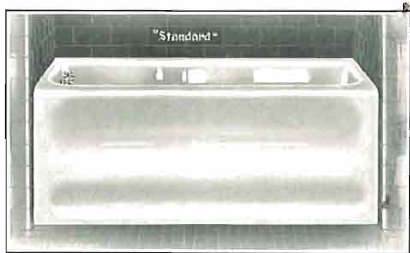
The Essex is the ideal bath for the small or the extra bathroom planned for comfort rather than decorative distinction. It is furnished regularly with the inside enameled, and a painted outside. The Essex with base is a very practical fixture as it eliminates the dirt-catching space under the tub. The Essex is 30 inches wide, 22½ inches high.

The P 2501 F is shown with a fitting which has a double bath faucet inside the tub, supplying hot, cold or tempered water through a single spout, and with a standing drain with a lift knob, on the outside of the tub. The P 2500 D has a double faucet and a connected drain and overflow with a rubber stopper. Illustrated on page 33 are two types of fittings which can be used to give the benefits of shower bathing to these baths.

The Kovald and Recwald are popular designs, where very limited space presents the greatest problem. They are especially adaptable for small apartments and for maids' bathrooms and can be had for either right or left outlet.

All the prices for baths listed in this book are for the fixtures in regular enamel. The one exception is the Royalton Bath illustrated on pages 23 and 24.

The superior durability of Acid-Resisting Enamel is just as desirable in baths and lavatories as in kitchen sinks and laundry trays. If your budget permits—by all means specify Acid-Resisting Enamel. It resists tile setters' acids, and is not affected by cleansing compounds or medicines. Its longer-lasting surface is a valuable feature if color is used, for a difference in shade may show wherever the surface gloss is removed. Then, too, Acid-Resisting Enamel is easy to clean.

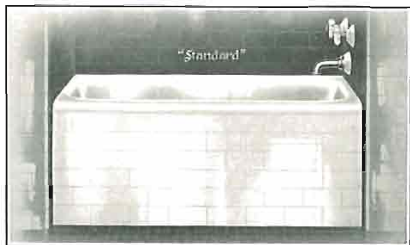


Kovald - P 2423 D

PRICES AND SIZES:
(Regular enamel and Chromard Finish Fittings)

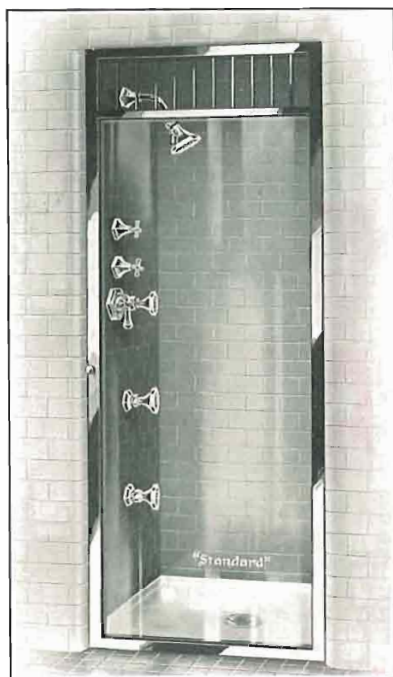
Length	IN COLOR		IN WHITE	
	P 2423 D	P 2430 N	P 2423 D	P 2430 N
43 in....	\$101.10	\$ 87.65	\$ 82.90	\$ 72.70
48 in....	101.10	87.65	82.90	72.70
	P 2500 D	P 2501 F	P 2500 D	P 2501 F
4 ft....	\$ 49.90	\$ 71.60	\$ 42.70	\$ 63.95
4½ ft....	49.90	71.60	42.70	63.95
5 ft....	49.90	71.60	42.70	63.95
5½ ft....	63.10	85.40	53.25	75.10
6 ft....	82.40	105.25	68.70	91.10

(For prices of fixtures in Ionian Black, see Note, page 20)



Recwald - P 2430 N





Shower - K 113 X



Shower - K 127

The advanced bathroom includes a compartment shower in its installation. It thus offers the owner and his guest the choice of a shower or tub bath. This shower conserves space and makes possible the use of additional sprays. The compartment shower also serves as a second or third bathroom in the home, when the total space given to bathrooms must be used economically.

The K 113 X is shown with an Acid-Resisting Enameled one-piece floor receptor, size 38 x 38 inches, with drain, and with Mastercraft fittings, including six adjustable body sprays, three under the shower head and three on the opposite wall.

The K 127 is supplied with two needle sprays. These sprays are in the form of tiny holes in the horseshoe shaped pipes on either side and give a most invigorating, tingling shower. Both showers, because of the unusual number of spray outlets, require an ample volume of water to assure satisfactory operation.

PRICES AND SIZES:

(All fittings in Chromard Finish, except where noted)

	IN COLOR	IN WHITE
K 113 X—Shower, less door, receptor, and drain	\$187.25
Add for P 2515, 38 x 38 in., receptor, in Acid-Resisting Enamel	\$111.25	92.85
K 113 X—Shower complete, with Chromard Finish glass door, 27 x 78 in., P 2515 receptor and drain	547.40	529.00
Add for gold-plate instead of Chromard on fittings	71.35
(Price for Shower door with gold-plate, on application)		
K 127 Shower, for 38 x 38 in. recess, (less floor strainer)	124.20
Add for Chromard curtain rod, floor strainer as shown, and white duck curtain	11.65





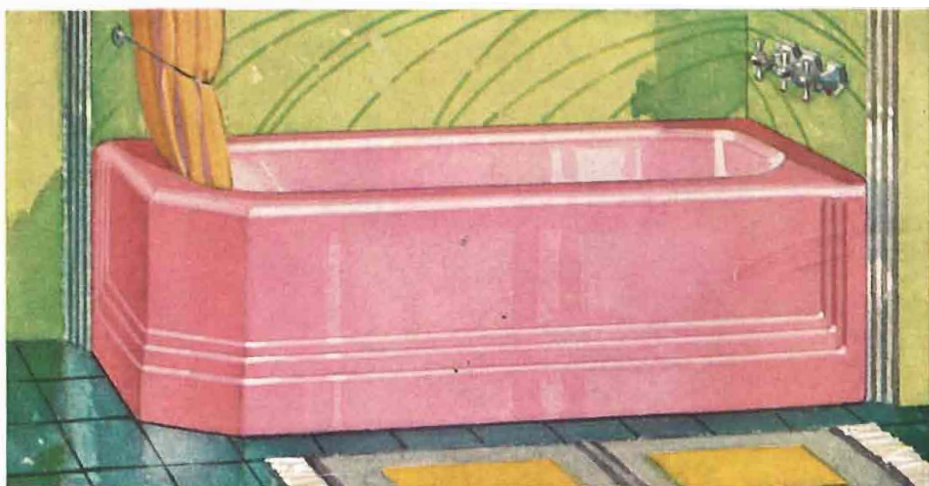
The Pembroke Neo-Classic Bath and the Woodmere Neo-Classic Bath, created by an international authority on design, are new models of the "Standard" Pembroke and Woodmere and bring to these fixtures, long known for their quality and durability, true beauty of modern design.

FIXTURES of MODERN DESIGN

All plumbing fixtures are modern in the sense that they are recent, but "Standard" Plumbing Fixtures in particular have that unstudied simplicity and beauty of line which make them adaptable for the present form of interior decoration. And of all "Standard" Plumbing Fixtures none is better suited to the modern setting than the Neo-Classic design.

The distinctiveness of this design combined with the unusual charm of any one of the "Standard" colors can be used as a starting point for a bathroom that is a truly modern and beautiful interior.





Woodmere Neo-Classic - P 2382 J (Finish X)

The Woodmere Neo-Classic and the Pembroke Neo-Classic have been developed so recently that it was impossible, on account of time required for printing and issuing of this book, to change the designs shown in the bathrooms on the front pages. The Woodmere design illustrated on page 9, and the Pembroke designs illustrated on pages 1, 3, 4, 5, 7, 8, 10, 11, 12 and 13 have been discontinued. Please remember that all bathrooms in which "Standard" Woodmeres or "Standard" Pembrokes are now planned to be used, should be designed to harmonize with the form and the lines of the Woodmere Neo-Classic and Pembroke Neo-Classic.



Woodmere Neo-Classic - P 2390 N

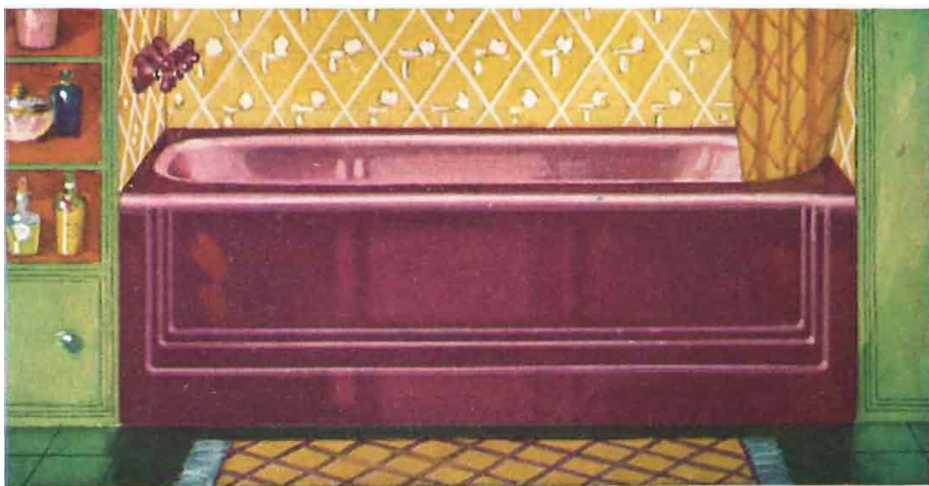




Pembroke Neo-Classic - P 2310 J

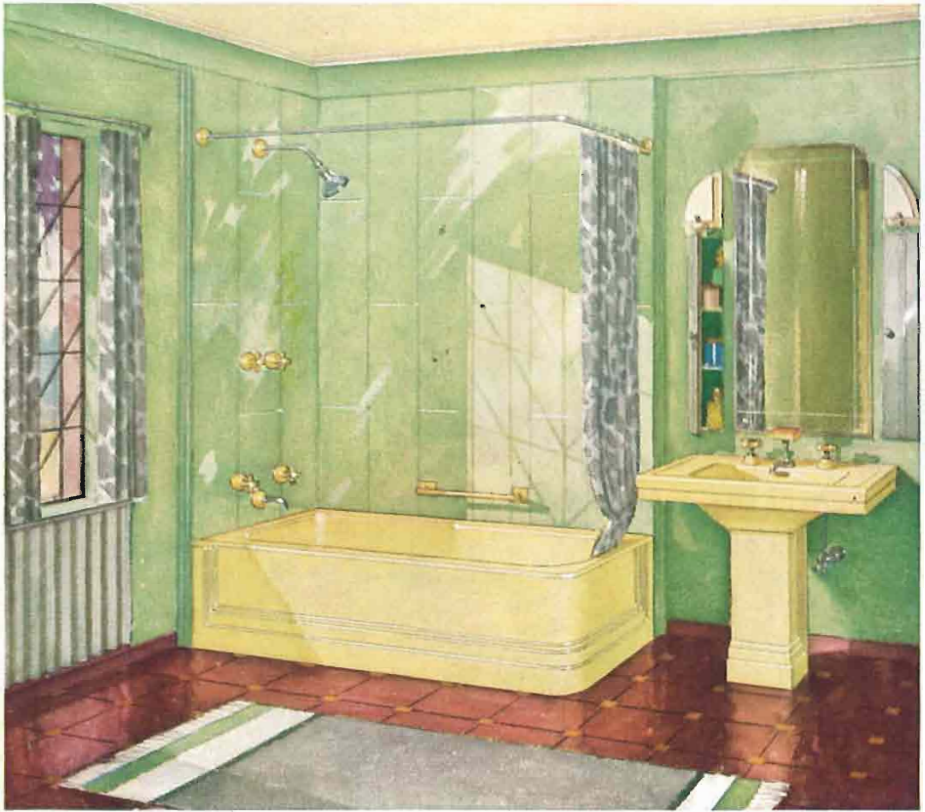
The Woodmere Neo-Classic corner style, shown on page 32-B, has a Chromard Finish Mastercraft fitting in the right end wall. This fitting has all the beauty of surface of fine silver, and its lines harmonize with the bath.

The Pembroke Neo-Classic Baths here shown are the same designs as those shown on page 27, except in color and with different fittings. Other models of the Woodmere Neo-Classic in white are illustrated on page 25. For prices for the Woodmeres see page 25, for the Pembrokes see page 27. Prices listed are for the baths and fittings only.



Pembroke Neo-Classic - P 2317 J





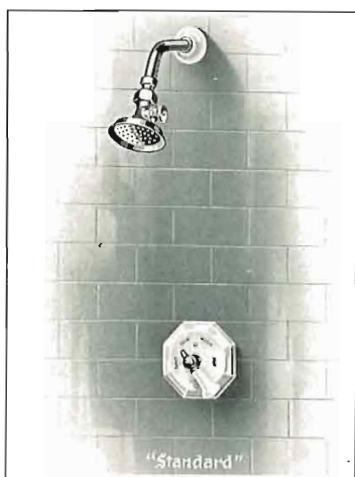
Study the bathroom illustrated on page 32-A and the bathroom above. Each expresses the true idea of modern design and construction—each emphasizes the beauty that is obtainable by a carefully planned use of the many modern materials now available.

The plan and general arrangement of the bathroom above is the same as the bathroom shown on page 5, except that the Pembroke Neo-Classic bath and a Neo-Classic design lavatory are shown.

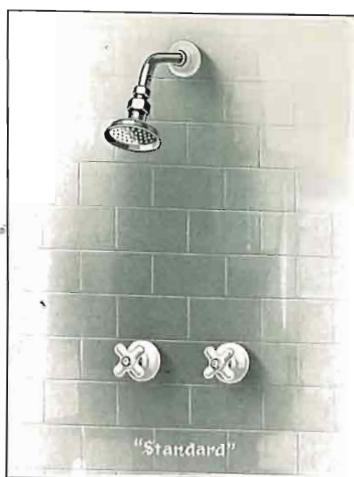
The lavatory illustrated in the above bathroom and in that on page 32-A is a companion fixture to the bath. Your Plumber can furnish full information about sizes and prices.

Bathrooms like these are practical, with all materials commercially obtainable. New fixture designs, a complete range of "Standard" colors, new materials for floors (such as linoleum, rubber, cork, carpet, colorful irregular tiles), new materials for walls (such as decorated plaster, waterproofed textiles, decorated wall papers, wood and rock composition board and many new designs, shapes and colors of tile) make possible a distinctive bathroom of reasonable cost for every home.





K 151



K 200

Every home with a large family or where guests are frequently entertained should have ample shower bathing facilities. The K 151 and K 200 are built-in showers, used most frequently in combined bath and shower installations. They can be used in separate compartments also.

The mixing valve shown in the K 151 supplies hot, tempered or cold water at a turn of the lever, a convenience and comfort for the bather. This shower is also shown with a volume regulator on the head, which controls the pressure of the streams.

"Standard" showers can also be had with a shower-head of vitreous china with a metal face and with a lever handle to regulate water volume and pressure. It is necessary to remove only one screw to clean these heads from sediment. China shower heads can be had in color, and thus complete the color accents needed for the fixtures.

In many homes which have but one bathroom a shower is installed in the basement or garage. Long, hot auto trips, strenuous golf or tennis matches, an afternoon of gardening or lawn-mowing—these activities call for a refreshing shower bath, and at such times the extra shower is a great convenience.

The K 666 and K 667 give the benefits of a shower to the owners of baths that are not tiled-in. These fittings include for the price shown, the bath valve with a special transfer valve which supplies water of the desired temperature to the shower head instead of to the bath faucet nozzle, a rubber hose and spray for the K 666, and a rigid plated riser and shower head, adjustable to desired positions, for the K 667.

PRICES:

(Metal parts in Chromard Finish)		China parts IN COLOR	China parts IN WHITE
K 151	\$ 32.00	\$ 31.10
K 200	18.20	16.40
K 666	} Supply pipes and drains not included	15.10	14.20
K 667		18.40	17.50



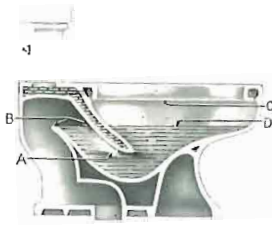
K 666



K 667



"Standard" WATER-CLOSETS



Cross section of the Purimo

A—Twin jet which accelerates water action.

B—Wide outlet channel—note deep seal of trap.

C—Narrow non-soiling flush rim—holes are punched to give smooth even flush to all surfaces of the bowl.

D—Large water surface of the bowl—prevents soiling.



Here are photographs of the tops of the bowls of the Purimo, Ariston, Madera and Devoro, respectively. Note the generous length of each, thus assuring comfort and preventing soiling of rim.

How a water-closet operates

Here is shown a cut-out view of the tank and bowl of the Purimo. When the lever handle A is turned, the lever B lifts the flush valve H from its seat. Water rushes through the flush connection G into the bowl. The first impulse of the water pressure reaches the jet K which starts a water movement into the outlet L and which siphons out the contents of the bowl. The greater part of the water flows from the holes of the flush rim J thus scouring and cleaning the sides of the bowl and adding its weight to give a rapid noiseless flush.

The valve H remains open until most of the water has entered the bowl, when the weight of the remaining water closes it. As the water level lowers, the float ball C drops and opens the supply valve D which begins to fill the tank. The float ball raises until sufficient water for the next flush has entered the tank, then the valve shuts off. Overflow E carries away any water entering above proper level, refill tube F supplies water to the bowl so there will be an assured water seal against sewer odors and gas.





Purimo - F 2005

"Standard" Water-closets are made of Genuine Vitreous China, the ideal material for these fixtures. Vitreous China is hard vitrified clay, fired at a temperature of 2500 degrees. The glaze, which is applied at a second firing of practically the same temperature, becomes a homogeneous part of the fixture, and thus will not stain, chip, craze or wear off.

As a glance at the cross-section of the Purimo, page 34, will show there are a number of walls on the inside of a closet bowl. Vitreous China is ideal for the bowl, only if these walls are of uniform thickness, and free from cracks. The "Standard" casting process is the only method which assures such conditions.

The surface of this Vitreous China is non-absorbent to moisture or soil, and assures a sanitary fixture, no matter how many years it may be used. Vitreous China is also the easiest of materials to clean.

A wet bowl-brush keeps the inside of the closet glistening, a damp cloth will keep the outside shining and bright.

* * * * *

The Purimo and the Ariston are the very highest types of "Standard" closets. Both are of the syphon jet type, and of pleasing design. Both have extra long bowls, that of the Purimo having the extended front and cut-out rear, the Ariston, having the same features, but not so pronounced in shape.

The Purimo is molded in graceful curves with a straight paneled tank, the Ariston has a number of faces in rim, bowl, and seat, in the modern manner. Both have the highest quality "Standard" water-control fittings.



Ariston - F 2015

Dimensions:	Width	Length— wall to front of bowl
PURIMO.....	22 3/4 inches	28 1/2 inches
ARISTON.....	23 inches	30 inches
PRICES:	IN COLOR	IN WHITE
PURIMO—F 2005....	\$124.00	\$ 99.00
ARISTON—F 2015....	166.00	135.00



"Standard" water-closets illustrated on pages 35, 36 and 37 are of syphon jet design. This is the most efficient flushing method. When the closet is flushed, water at once enters the up-leg of the outlet through the jet shown in the illustration, page 34. This creates a syphonic action which removes the contents from the bowl, quickly, without the churning or agitation found in so many of the less expensive closets or those of unproven design.

"Standard" closets have twin jet channels to promote quicker action. The jets are concealed, eliminating the unsightly bulging jet channels at the back. They can be drained free of water in freezing weather if the house is closed, thus preventing cracked bowls.

* * * * *

The Master Madera and Master Devoro are ideal closets where the most efficient action is desired and where the budget requires some economy. The Master Madera has the elongated type bowl, the Master Devoro a round front type bowl without the elongation. Both have the same efficient water control as used in the Purimo and Ariston, both have full size tanks of pleasing design.



Master Madera - F 2025

These closets are sure to give long, dependable, troublefree service and represent a sure economy of purchase over a period of years in installation.

These water-closets and the Purimo and Ariston illustrated on page 35 are furnished regularly with "Church" seats in sea pearl finish. When the closets are supplied in color, the seats are in the same color. The hinges regularly furnished are plated in Chromard. The tank handles, regularly furnished in china can be had in all-metal design, at extra cost.



Master Devoro - F 2035

Dimensions:	Width	Wall to front of bowl
MASTER MADERA	22 3/4 in.	29 1/2 in.
MASTER DEVORO	22 3/4 in.	27 3/4 in.
PRICES:	IN COLOR	IN WHITE
MASTER MADERA F 2025	\$124.00	\$ 99.00
MASTER DEVORO F 2035	112.00	89.00





Devoro - F 2122

The Devoro and Madera are installed and operating satisfactorily in thousands of homes. They are syphon jet closets of the lowest possible cost, quality still being considered. The bowls are identical in shape and design with those closets shown on page 36.

The tanks and the china housing for the flush connections are more simple in form, the fittings are of good quality and design, and will give years of efficient service.

All china caps covering the bolts which fasten the water-closet to the floor are supplied in white, or if the closet is in color, in the same color.

Dimensions:	Width	Wall to front of bowl
DEVORO	23 1/2 in.	27 3/4 in.
MADERA	23 1/2 in.	29 1/2 in.
PRICES:	IN COLOR	IN WHITE
DEVORO F 2122...	\$ 70.35	\$ 49.75
MADERA F 2102	79.50	56.60

"Standard" water-closet bowls are designed to provide the largest water surface possible. The ideal closet is one which has a permanent water level under the entire opening of the bowl.

The syphon jet type of "Standard" closets realizes this condition more than any other. This assures a clean sanitary bowl surface and prevents soiling.

The water-seal, the depth of water from the top surface to the lowest part of the trap, affords protection from sewer gases. This seal must be generous, so there will be no possibility of gases leaking through. Note again, in the illustration on page 34 how deep is the "Standard" water-seal.

It is important, also, that the outlet channel be large, to permit passage of sanitary pads, often disposed of in this manner. Here, too, "Standard" closets safeguard sanitation, for the large bowl outlets in "Standard" closets assure freedom from stoppage.

* * * * *



Madera - F 2102



The most important part of the water-closet is the part you don't see—the fitting inside the tank. Shown in the cut-out illustration of the Purimo, page 34, is a view of the construction of the famous "Standard" Water Control. It is an improved flushing mechanism, perfected after years of actual operation.

It is a most efficient and dependable fitting. It is as quiet as possible and still permit good mechanical action and quick refill of the tank. The sound of the flushing action cannot be heard beyond the bathroom.

Working parts are of heavy, non-corroding red metal, the flush ball of pure gum rubber and the float valve of hard rubber.

It and all "Standard" water-closet tank fittings, can be furnished with a concealed supply, which is supplied through the back of the tank, or an exposed supply, filled through a short plated pipe entering the tank from underneath. The "Standard" water-control fitting is regularly furnished with the Purimo, Ariston, Master Madera, and Master Devoro.

* * * * *

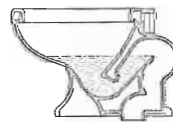


Siacto - F 2148



Madbrook - F 2143

On this page are two moderate cost closets, which are so constructed that a quick and complete flush is obtained. The weight of the water entering through the rim supplies the greater part of the flushing action but the bowl is so constructed that an action similar to that of the syphon jet is employed to secure quick and quiet removal of the contents. The Madbrook has an elongated bowl, the Siacto bowl is furnished with a rounded front.



Cross section of the Siacto closet. Water surface is under practically the full seat opening.

Dimensions	Width	Wall to front of bowl
SIACTO	20 3/4 in.	27 in.
MADBROOK	20 3/4 in.	29 in.
PRICE	IN COLOR	IN WHITE
SIACTO —F 2148	\$64.35	\$42.70
MADBROOK —F 2143	73.45	49.50



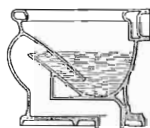


Maderno - F 2174

"Standard" closets which meet the need for washdown type in which the weight of the water entering through the flush rim empties the bowl. A jet at the back starts the flush. The Maderno has an elongated bowl, the Ejecto is of the round front type.

Closets on pages 38 and 39 are supplied from the back through a pyralin covered brass flush pipe. All "Standard" closets are thoroughly tested at the factories and are packed complete in individual crates. "Standard" closets are made entirely in "Standard" factories.

Dimensions	Width	Wall to front of bowl
MADERNO . . .	20 $\frac{3}{4}$ in.	28 in.
EJECTO	20 $\frac{3}{4}$ in.	26 $\frac{1}{4}$ in.
PRICES	IN COLOR	IN WHITE
MADERNO —F 2174	\$ 69.75	\$ 45.80
EJECTO —F 2185	60.65	39.00



Cross section of the Ejecto. The water surface is larger than in most closets of this type.

An important part of every closet is the seat. The "Standard" closets illustrated in this book are furnished with the well known attractive "Church" brand of seats. These are made of fully seasoned wood, are non-warping, and covered with durable sheet Pyralin. This sheet covering will not open up, crack, or craze and, being non-absorbent, is easy to keep clean and sanitary.

The hinge, too, is important. It must be of strong, rugged construction and must be so attached to the seat that it will prevent the seat and cover from becoming loose and wobbling. "Standard" brass hinges are used on "Church" seats and are attached with re-inforcing pins.

In the prices shown for white closets the seats are included in white; and for closets in color the seats in same color, plain finish, or in sea pearl for those closets mentioned on page 36.

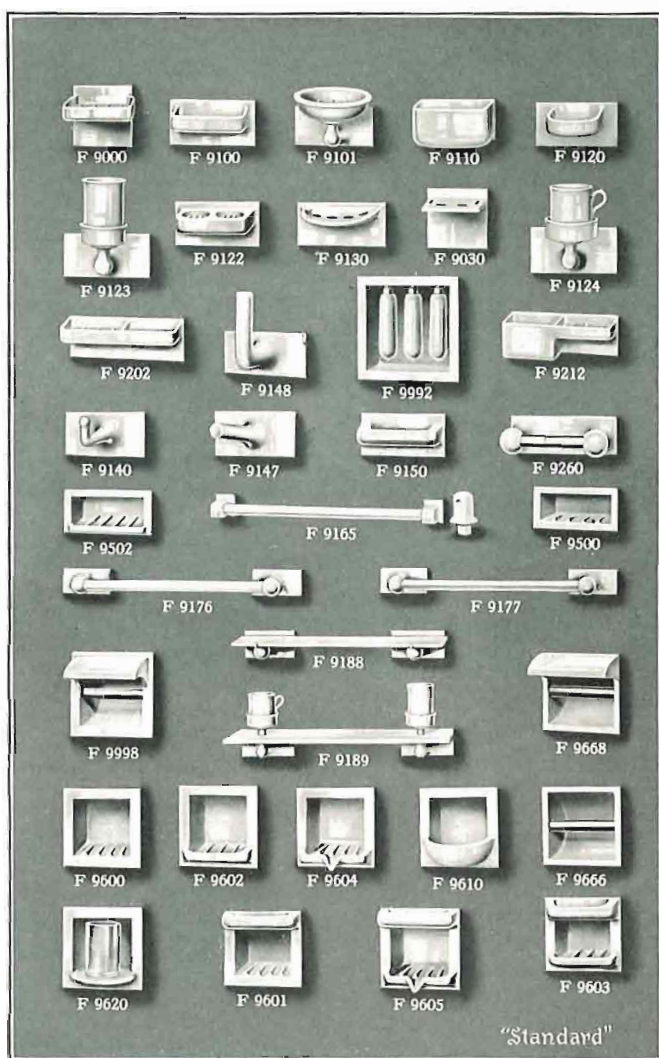
* * * * *

The Maderno and Ejecto are for strict economy. They are of the



Ejecto-F 2185





"Standard" bathroom accessories are made for tiled-in installations and are designed to fill practically every need. They are made of genuine vitreous china and in sizes to fit with one or two courses of commonly used tile. They can be had in white or in any of the nine "Standard" colors. Against the contrasting shades of the walls, they provide interesting spots of color when repeating the fixture colors.

"Standard" china accessories are of a greatly superior type. They are made in "Standard" factories, of the same grade of materials as are vitreous china lavatories and water-closets. They are fired at the same temperature as the fixtures, and represent the very highest in quality.

See the accessories you desire in a "Standard" Showroom or refer to the "Standard" general catalogue of your Plumber, for sizes and prices.



THE "Standard" "THREE 8's" SINK — —the ideal design for the modern kitchen

Under the window where the light comes in—that is the correct place for the kitchen sink. But before it could be placed there it was necessary for "Standard" to design and introduce a sink with an 8-inch low back.

At the same time the sink compartment itself was made a full 8 inches deep—two inches more than usual—to prevent over-the-rim splashing.

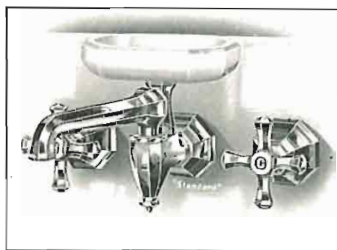
Then an 8-inch front was designed so that the proportions of the sink would be harmonious and beautiful. So popular has the 8-inch low back become that "Standard" sinks with 12-inch high backs have been discontinued.

Of course the "Three 8's" Sink is installed yard-stick-high and is made in one solid piece. The one-piece construction will always be the most sanitary and satisfactory construction for the kitchen sink. It is the easiest and most economical to install—and once installed there are no joints between sink, drain-board and back, as there are with the sink installed with built-in parts, which may become unsanitary.

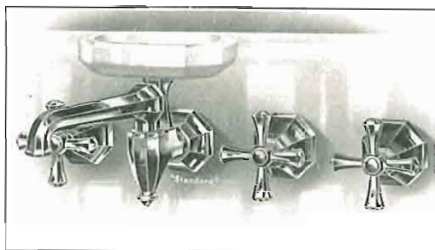
All "Standard" sinks are available in both regular enamel and Acid-Resisting Enamel. Acid-Resisting Enamel is recommended because fruit and vegetable acids cannot roughen or discolor it. Minerals in the water do not stain it. It will not become pitted with tiny particles of dirt. Its glass-like surface is easy to keep clean and shining. Acid-Resisting Enameled Sinks are available in all the "Standard" colors.



The "Three 8's" and other designs of "Standard" Sinks, Acid-Resisting Enamel, white and colored, Chromard finish, and many other "Standard" products bear the endorsement of the Good Housekeeping Institute and the Delineator Home Institute. Only articles that have undergone severe actual usage tests in the model homes and kitchens of these Institutes bear their approval. These seals of endorsement add to your assurance of a quality product.



K 882 S

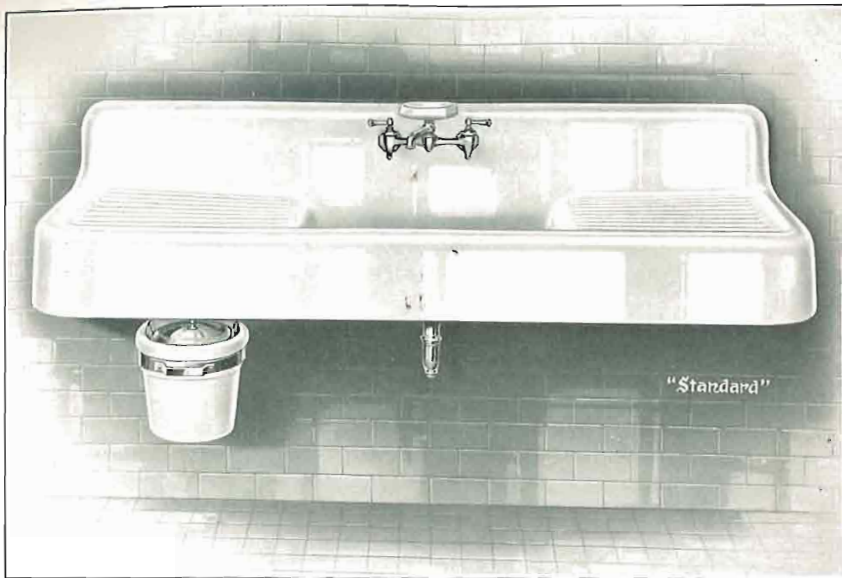


K 883 S

Shown above are the K 882 S and the K 883 S "Standard" Mastercraft faucets for sinks. These are of Chromard Finish with China or Chromard soap dishes. The K 882 S supplies hot and cold water to the spout, the K 883 S has an extra valve for soft water, filtered water or ice water. They can be supplied for "Standard" sinks at an additional cost. Consult your Plumber for information about these attractive, non-tarnishing, easy-to-clean faucets.



THE "THREE 8's" SINK

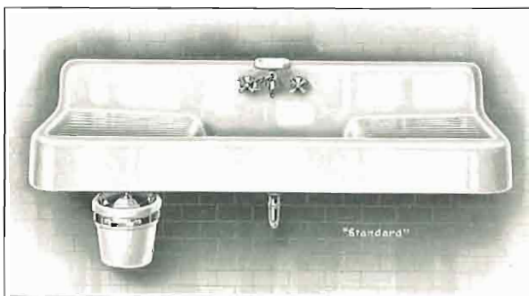


Brentwood - P 6660 Q S

What could contribute more to the beauty of your kitchen than this lovely massive Brentwood "Three 8's" Sink in the "Standard" color you prefer?

All in one piece, with not a crevice in which dirt or grease can accumulate, it will keep its gleaming beauty indefinitely and give you many happy hours at its side. It is easy to clean and will make your kitchen the model of the neighborhood.

The Brentwood, the double-drain-board model of the "Three 8's" design, is illustrated on this page with two types of faucets. The P 6660 Q S is shown with the K 888 S Mastercraft faucet and the P 6661 R S is illustrated with the K 882 S, a faucet with two valves through the back of the sink.



Brentwood - P 6661 R S

All "Three 8's" Sinks can be had with the garbage container shown in the illustration. Add for same in color, \$23.75; in white, \$20.00. "Three 8's" Sinks can also be had in Regular Enamel, and with the K 902 S faucet shown on page 50, at a more economical cost. Ask your Plumber for prices.

PRICES AND SIZES:

Prices shown are for "Three 8's" Sinks in Acid-Resisting Enamel, with Mastercraft design faucets, strainer and trap in Chromard, and with cast-iron wall hangers. (Garbage container not included)

	60 x 22 in.	74 x 22 in.	78 x 22 in.
	IN COLOR		
P 6660 Q S	\$145.15	\$163.35	\$175.75
P 6661 R S	148.75	166.95	179.35
	IN WHITE		
P 6660 Q S	126.60	141.75	152.10
P 6661 R S	130.20	145.35	155.70



THE "THREE 8's" SINK



Glenmere - P 6656 Q S

The Glenmere is the most popular design of the "Three 8's" Sink as it gives ample work room and still fits into limited space. Even in the 42 inch length, so popular in apartment kitchenettes, it is an efficient fixture. And in color, its appealing beauty is unquestioned. It is made with right or left hand sink compartments, as shown. Dimensions for the Glenmere, and those "Three 8's" Sinks shown on pages 42 and 44 are listed at the left.

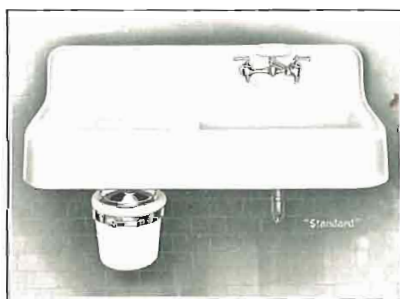
Dimensions:
(for "Three 8's" Sinks — pages 42, 43, 44.)
Length of Sink Compartment

	42 X 22 in.	52 X 22 in.
P 6656 Q S	21 $\frac{7}{8}$ in.	27 $\frac{7}{8}$ in.
P 6665 Q S—P 6680 Q S		27 $\frac{1}{4}$ in.
	60 X 22 in.	74 X 22 in.
P 6660 Q S }	22 in.	26 in.
P 6661 R S }		28 in.

Length of Drain-boards:

	42 X 22 in.	52 X 22 in.
P 6656 Q S	20 $\frac{7}{8}$ in.	24 $\frac{7}{8}$ in.
P 6665 Q S—P 6680 Q S		24 $\frac{5}{8}$ in.
	60 X 22 in.	74 X 22 in.
P 6660 Q S }	19 $\frac{3}{8}$ in.	24 $\frac{3}{8}$ in.
P 6661 R S }		25 $\frac{3}{8}$ in.
(each drain-board)		

(Dimensions are the same for P 6657 Q S and P 6656 Q S, for P 6665 Q S and P 6666 Q S, and for P 6680 Q S and P 6681 Q S.)



Glenmere - P 6657 Q S

PRICES AND SIZES:

(In Acid-Resisting Enamel and Chrom-ard Finish Fittings)	IN COLOR		IN WHITE	
	42 X 22 in.	52 X 22 in.	42 X 22 in.	52 X 22 in.
P 6656 Q S or P 6657 Q S	\$103.20	\$114.55	\$91.65	\$101.10

(Add for Garbage Container: In Color \$23.75; In White \$20.00. See Note, page 42, for additional price information)



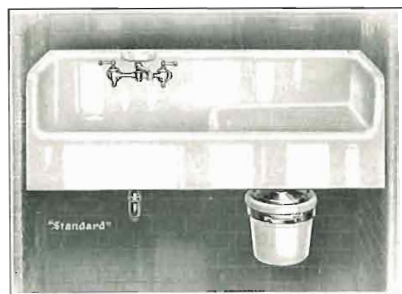
THE "THREE 8's" SINK



Stratford - P 6665 Q S

The Stratford is the corner model, and the Sherborne the recess model, of the "Three 8's" Sink design. The Stratford is also made for a right corner with drain-board on the left end, P 6666 Q S. The Sherborne is also made with the sink compartment on the right side (P 6681 Q S).

Beautiful fixtures these, and representative of the most modern in kitchen sink equipment. And particularly so, if supplied in Acid-Resisting Enamel, for Acid-Resisting Enamel is a positive assurance against discoloration. This feature alone, when colored sinks are installed, is worth many times its cost in the added satisfaction and protection it gives.



Sherborne - P 6680 Q S

You can install a "Three 8's" Sink in place of your present sink with very little cost for the actual installation. The faucet has the same dimensions as the ordinarily used swinging spout type. A slight change in wall brackets may be required but the trap, in practically every case, can be fitted direct to the old waste line.

Let your Plumber tell you how easy it is to have this sink. And remember, you can have it on the convenient Time Payment Plan mentioned on page 58.

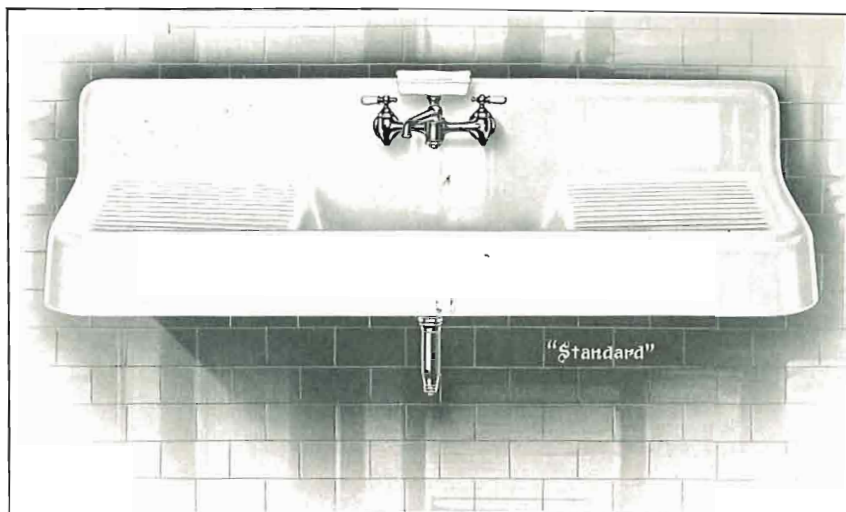
PRICES AND SIZES:

(With Acid-Resisting Enamel and Chromard Finish Fittings)	52 X 22 in.	
	IN COLOR	IN WHITE
P 6665 Q S or P 6666 Q S (right corner)—less garbage container . . .	\$125.90	\$110.55
P 6680 Q S or P 6681 Q S (sink on right)—less garbage container . . .	165.55	143.60

(Add for Garbage Container, In Color, \$23.75; In White, \$20.00. See Note, page 42, for additional price information)



THE 8-INCH LOW BACK - 6-INCH DEEP SINK



Clinton - P 6710 Q S

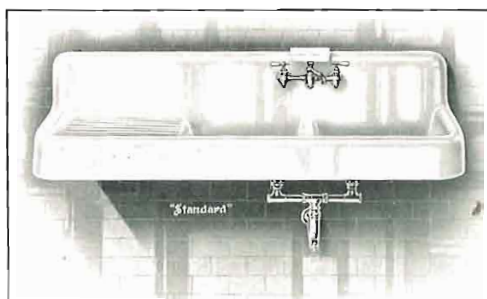
To meet the growing demand for the low back type sink, "Standard" has made a remarkable step forward by offering the regular design sink with the 8-inch low back.

These sinks, for years furnished with a back 12 inches high, now may be installed under the low window and so improve the appearance and arrangement of the whole kitchen. The sink depth is still 6 inches, the apron type sinks still have the 6-inch deep apron.

Shown on this page are the double drain-board and double compartment sinks of the new 8-inch back, 6-inch deep style.

Your Plumber can show you an illustration of the double compartment sink with drain-boards at each end.

The faucet is the popular K 902 S, shown on page 50. It is furnished with a china soap dish. When sinks are in color, the soap dish and china handles of the faucet are of the same color.



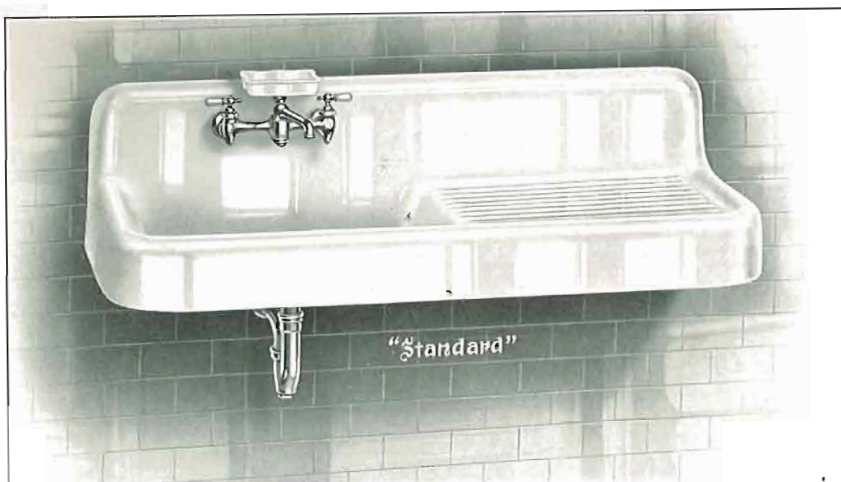
Hampton - P 6737 Q S

PRICES AND SIZES:

	60 x 22 in.		74 x 20 in.		78 x 22 in.	
	IN COLOR	IN WHITE	IN COLOR	IN WHITE	IN COLOR	IN WHITE
P 6710 Q S	\$ 78.65	\$ 65.55	\$ 115.05	\$ 94.65	\$ 122.65	\$ 100.75
P 6737 Q S, or P 6736 Q S (Drain-board on right)	122.55	102.75

(NOTE—All "Standard" enameled fixtures in Ionian Black are furnished in Acid-Resisting Enamel only, at approximately 25% additional in cost to the color prices shown. Consult your Plumber for exact prices. All other enameled fixtures in this book are priced, both in white and color, in regular enamel unless otherwise noted)





Bedford - P 6706 Q S



Concord - P 6715 Q S



Wayne - P 6721 Q S

The Bedford, Wayne and Concord styles of 6-inch deep apron sinks have been installed in many thousands of homes. They are well proportioned, roomy, and fill the need for attractive, yet inexpensive, combination sinks and drain-boards. The corner sinks can be had with either drain-boards or sink compartments against the side wall, as preferred.

The hot and cold water valves of the faucet supply water through a swinging spout, the stream from which will reach practically the whole of the sink compartment.

The sinks with 6-inch deep compartments are priced in this book in regular enamel. Acid-Resisting Enamel, while it adds somewhat to the cost, more than repays its price in the added beauty, service and convenience it provides. Ask your Plumber about this superior enamel, and for a demonstration of its qualities.

PRICES AND SIZES*

	42 X 20 in.		52 X 20 in.		60 X 22 in.	
	IN COLOR	IN WHITE	IN COLOR	IN WHITE	IN COLOR	IN WHITE
(With Chromard Finish faucet, strainer, and trap)						
P 6706 Q S, or P 6707 Q S — (left drain-board)	\$55.25	\$46.80	\$76.15	\$63.55	\$90.90	\$75.35
P 6715 Q S, or P 6716 Q S — (right corner)	65.20	54.80	80.90	67.35	95.70	79.20
P 6721 Q S, or P 6720 Q S — (left corner)	65.20	54.80	80.90	67.35	95.70	79.20

(For prices for the fixtures in Ionian Black, see Note, page 45)





Hudson - P 6814 Q S

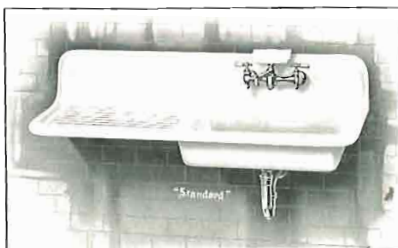
Perhaps no one-piece sink ever made has enjoyed greater popularity than the type here illustrated. These sinks have brought to those homes where strict economy controls the selection, all the benefits of the apron type—one-piece construction, with no joints or crevices, roomy compartments and drain-boards, pleasing appearance and efficient swinging spout faucet.

Think how cheerful your kitchen would be if you replaced the old, worn-out sink that you have used so long with one of these handsome one-piece models. And replacing your present sink, usually involves no great labor charge, as the new sink can in most cases be served by the same supply pipes as the old one.

In color, with Acid-Resisting Enamel and under a low window, it will bring new beauty and convenience to your kitchen. The "Standard" Time Payment Plan provides an easy way to have it.



Warren - P 6815 Q S



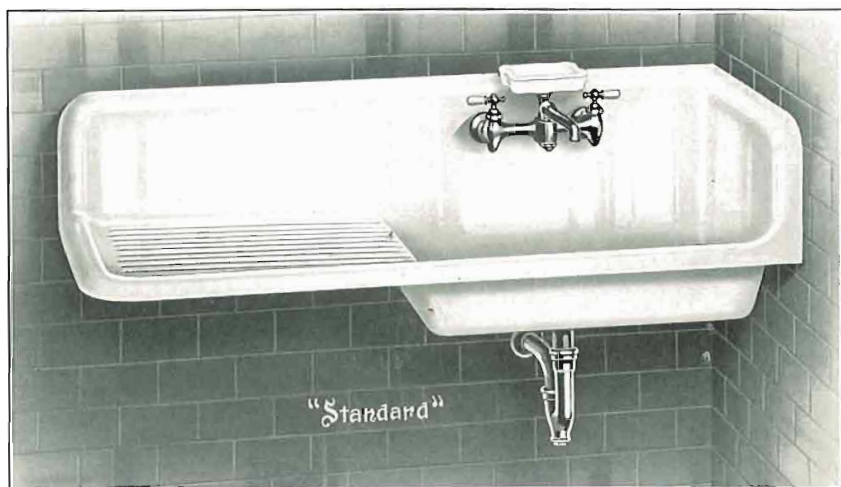
Warren - P 6816 Q S

PRICES AND SIZES:

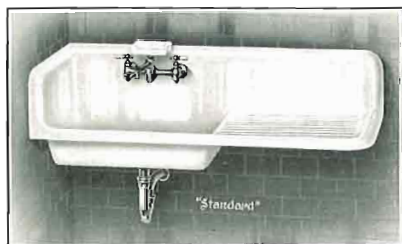
(With Chromard Fittings)	42 x 20 in.	46 x 20 in.	52 x 20 in.	52 x 22 in.	60 x 22 in.
P 6814 Q S					
IN COLOR.....	\$75.65
IN WHITE.....	63.15
P 6815 Q S or P 6816 Q S					
IN COLOR.....	\$48.20	\$58.85	\$61.45	\$64.05	84.55
IN WHITE.....	41.20	49.70	51.80	53.85	70.25

(For prices of fixtures in Ionian Black, see Note, page 45)

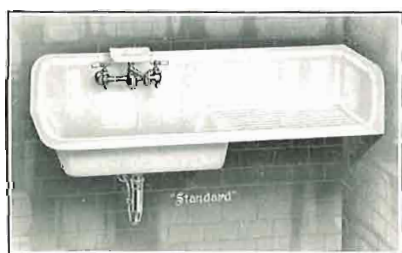




Putnam - P 6821 Q S



Putnam - P 6820 Q S



Stark - P 6825 Q S

The great variety of "Standard" sinks permits you to have the design best suited to your requirements and your budget.

Here are three styles of the roll-rim corner type sinks. The P 6820 and P 6821 are for opposite corners with the sink compartment next to the wall. The P 6825 (and the P 6824 for the left corner), have the drain-board next to the wall.

The corner type of sink is an adaptable type. The end surface can be placed against a wall, or can be installed against a built-in cabinet, which provides a convenient location for pots, pans and utensils used around a sink.

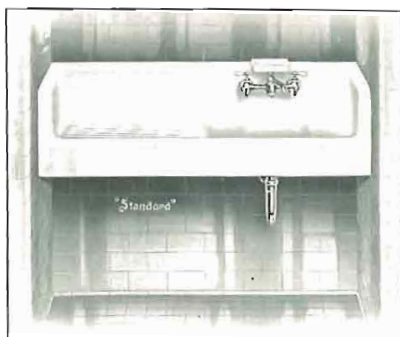
All 8-inch back - 6-inch deep sinks listed in this book include in the price shown, the sink, faucet with soap dish, strainer, and cast brass sink trap. Metal parts are Chromard Finish, china parts in white or color. Sink is painted in white or color on the under side. Sturdy cast-iron wall hangers are also included in the prices.

PRICES AND SIZES:

(With Chromard Fittings)	46 x 20 in.	52 x 20 in.	52 x 22 in.	60 x 22 in.
P 6820 Q S or P 6821 Q S				
IN COLOR.....	\$67.10	\$70.95	\$73.60	\$97.35
IN WHITE.....	56.30	59.40	61.50	80.50
P 6825 Q S or P 6824 Q S (left corner)				
IN COLOR.....	67.10	70.95	73.60	97.35
IN WHITE.....	56.30	59.40	61.50	80.50

(For prices of enameled fixtures in Ionian Black, see Note, page 45)





Portland - P 6731 Q S



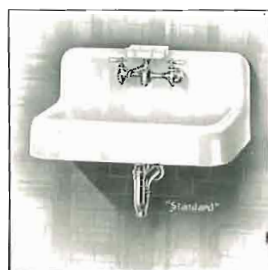
Hale - P 6830 Q S

All 8-inch back regular models, both apron and roll-rim types, have sink compartments and drain boards of generous dimensions. Those sinks less than 52 inches long over-all have drainboards no less than 18 inches in length and sink compartments from 22 inches up.

Sinks that are 52 inches long or over, have drain-boards 19 inches or more in length and sink compartments not less than 22 inches. An exception is the P 6736 QS which has two compartments, each 18 inches long and a 20-inch drain-board. Actual dimensions of each type sink are shown in your Plumber's catalogue.

Shown on this page are two types of "Standard" recess sinks and two types of sinks without drainboards. The recess types of sinks, "Three 8's" or the designs shown above, are very popular models for kitchens which make the most economical use of space. In keeping with the increasing demand for built-in kitchen furniture, these sinks will meet many installation needs.

P 6700 QS and the P 6800 E are made in a wide variety of sizes. All are reasonably priced and allow every home owner, no matter how modest his budget, to have the convenience of a modern kitchen sink.




Madison - P 6700 Q S



Salem - P 6800 E

PRICES AND SIZES:

(With Chromard Fittings)		IN COLOR		IN WHITE	
P 6731 Q S, or P 6730 Q S (drain-board on right)—					
52 x 20 inches		\$ 97.05		\$80.30	
60 x 22 inches.....		113.40		93.35	
P 6830 Q S, or P 6831 Q S (drain-board on left)—					
52 x 20 inches.....		97.65		81.20	
60 x 22 inches.....		116.20		96.05	
P 6700 Q S	30 x 18 in.	24 x 20 in.	30 x 20 in.	36 x 20 in.	
In Color	\$60.95	\$57.35	\$62.20	\$70.35	
In White	51.40	48.50	52.40	58.90	
P 6800 E	24 x 18 in.	30 x 18 in.	24 x 20 in.	30 x 20 in.	36 x 20 in.
In Color	\$24.15	\$28.25	\$30.20	\$29.40	\$36.40
In White	21.45	24.75	26.30	25.65	31.25



Salem - P 6800 E

37.70

P 6700 Q S and P 6800 E are made in other sizes. Consult your Plumber. (For prices of fixtures in Ionian Black, see Note, page 45)



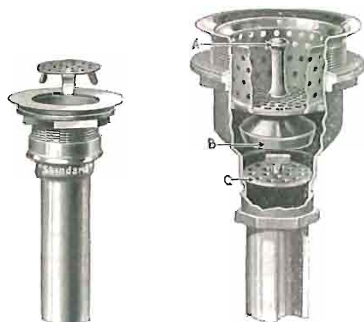
THE DOUBLE SINK STRAINER

All sinks in this book, both the "Three 8's" and regular types, are priced with the K 759 strainer. This is a flat strainer, flush with the bottom of the sink. The "Three-8's" types and those with the 6-inch apron can also be had with the K 878 strainer, at an additional cost.

This type of strainer permits the use of the sink compartment to hold the dishes, eliminating the old-fashioned dish-pan. As noted in the cut-out view, it is wider in diameter than the K 759 and has a cup and auxiliary strainer.

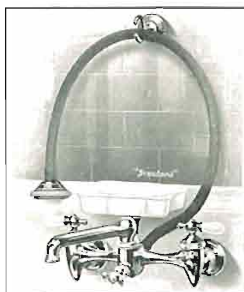
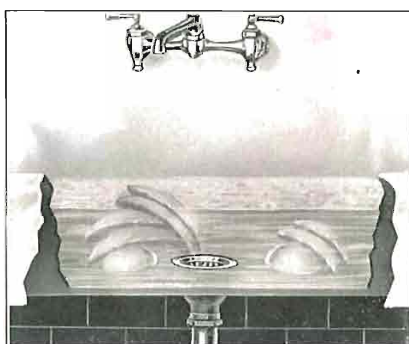
The cup is lowered into the strainer by the knob (A). The plug (B) forms a seat and holds the water in the compartment. Food particles lodge in the cup strainer, and when the cup is lifted the water drains off. The strainer (C) is an added safeguard.

A similar strainer with lift handle in the back of the sink can be had, also. This modern convenience is not costly as the comparison of prices below shows. Consult your Plumber for prices of the particular sink you prefer.



K 759

K 878



K 907 S



K 902 S

- P 6706—42 x 20 inches, in white Regular Enamel
 with K 759 strainer..... \$29.00
 with K 878 strainer..... 31.80
 P 6656—52 x 20 inches, in white A-R Enamel
 with K 759 strainer..... 63.45
 with K 878 strainer..... 66.25

"Standard" Faucets for every kitchen need

Does your present sink faucet leak? Is it tarnished, or the handles broken? Why not replace it, at once, with a handsome "Standard" swinging spout design? The K 902 S and the K 907 S are two very popular types, with an 8-inch spread between supply pipes, and can be attached to the pipes which supply your present faucets. A strap wrench, as a rule, is all that is needed to make the change. These faucets are of pleasing design, in Chromard finish, and have the RE-NU feature. The K 907 S has a transfer valve that furnishes hot, cold or tempered water to the rinsing spray.

PRICES: (With Chromard Finish)	CHINA PARTS IN COLOR	CHINA PARTS IN WHITE
K 902 S	\$13.55	\$12.15
K 907 S	18.75	17.05





Color in "Standard" Kitchen Sinks

Just imagine your kitchen with a "Standard" sink of Ming Green. Walls of peach color and trimmings of light blue. Wouldn't it be a radiant and cheerful kitchen? Nothing has done more to make the kitchen attractive than, the well-designed sink in color.

Perhaps you would prefer to originate your own color scheme. Select the color for the sink first—mellow ivory, delicate orchid, light blue, Ming Green, or rose, are preferred by most—then choose a contrasting color for the walls that will bring out the color of the sink. And with the great variety of colors available for other items of kitchen equipment, it is so easy to complete the scheme with harmonious color accents in the woodwork, curtains, other furniture and kitchenware.

A handy garbage container

All "Standard" sinks are more efficient if equipped with "Standard" garbage containers. The "Three 8's" designs can be had with the container attached directly to the sink.

The container shown here fastens to the wall under your present sink. The container is made of vitreous china and pushes back under the sink when not in use.

PRICES:

	IN COLOR	IN WHITE
P 6961 (for "Three 8's" sinks)....	\$23.75	\$20.00
P 6962	24.75	21.00



P 6962





THE "Standard" ELECTRIC DISHWASHER



The compartment is easy to clean, only the spray nozzle remains after the removal of the basket, which is easily lifted out.

Food particles are removed from the soapy water by this double strainer.

The basket of heavy non-corroding wire, holds dishes for a family of six. Separate compartment holds silverware.



Dishwashing three times a day! Is there a woman who does her own work who doesn't long to escape from the monotony of dishwashing? An electric dishwasher—that is the way out of the never-ending task!

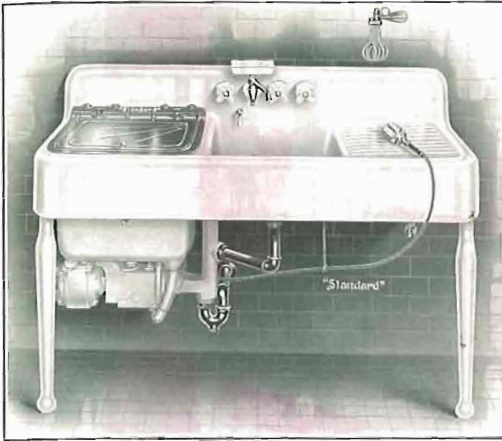
The "Standard" Electric Dishwasher has exclusive features which make it the most efficient and dependable electric dishwasher ever developed. A centrifugal pump is used to obtain the forceful water action. The dishwashing compartment has its own hot water supply so that no hose is needed to rinse the dishes.

The soapy water circulates through the pump and is sprayed upon the dishes in strong, evenly distributed streams which deluge every dish, but are so directed that not even the thinnest china is moved from its place. The basket, supported in a friction socket, can be stopped by a touch of the hand.

Food particles are removed from the water and are held by the efficient double strainer. This means that the water, which is recirculated by the pump, is clean, and does not carry the food particles back onto the dishes.

An exclusive feature which will appeal to every housewife is the flexible shaft with a whipper attachment. This whipper can be used for whipping cream, for beating eggs, mixing salad dressings, etc.





Dishwasher (with extra drain-board) - P 6901

turned slowly in the basket, removes the soil. Switch off the current and drain the washing water. Start the basket again and turn on the rinse valve. Clear, hot rinse water direct from the supply line is sprayed over all the dishes. Dishes can be quickly and easily removed from the tray and the basket, or may be allowed to remain in the basket until the next meal, if desired.

Shown on this page are three popular models of the "Standard" Dishwasher. The P 6901 and P 6900 (drain-board on left) are 61 x 24 inches in size. The P 6908 and P 6907 (with sink on left) are 46 x 24 inches in size. The P 6915 is furnished with the flexible shaft and has only the hot water rinsing spray valve which also supplies the dishwasher. The motor regularly furnished is $\frac{1}{4}$ H. P., A. C. single phase, 110 volts, 60 cycles. Motors for other kinds of current are available at an added cost.

Food acids and cleansers cannot roughen or discolor the "Standard" Electric Dishwasher, because it is made of Acid-Resisting Enamel.

PRICES (With A-R Enamel, Chromard Fittings):

	IN COLOR	IN WHITE
P 6900 or P 6901 (less legs)	\$425.00	\$390.00
P 6907 or P 6908 (includes whipper shown for P 6901)	395.00	365.00
P 6915 (includes flexible shaft and whipper)	345.00	325.00

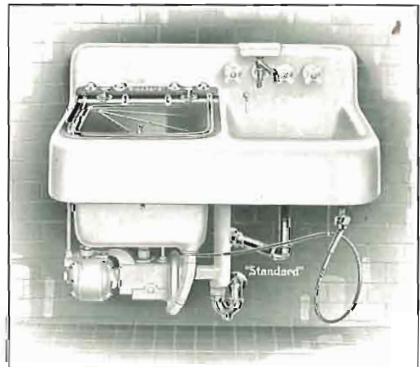
Add for garbage container, as shown on Page 51: In Color, \$24.75; In White, \$21.00. (Garbage container cannot be attached direct to P 6915)

How the Dishwasher operates

The Dishwashing compartment is filled with hot water up to the level designated on the bottom of the basket, and a small amount of dishwashing powder is sprinkled in. The basket is filled with dishes—the silverware in the center compartment, platters, plates and saucers in the lower basket, cups and glassware in the top tray—and the lid is closed. Turn on the switch and the hot soapy water, circulated in forceful sprays over and over again onto all surfaces of the dishes as they are



Dishwasher - P 6915



Dishwasher (with sink) - P 6908



"Standard" ELECTRIC CLOTHES - WASHER

How cheerfully the housewife welcomes wash-day when the laundry is designed and constructed to permit the installation of the modern "Standard" Washer as shown in this illustration. And how quickly the work will be done when the laundry unit is completely "Standard".

The "Standard" Electric Clothes-washer, uses the reversing agitator principle to obtain the most rapid and thorough washing action. This mechanical principle has long been recognized as one of the simplest and therefore most dependable.

Surging through the clothes the soapy

water loosens and washes away every speck of soil. No particle of dirt can escape, yet forceful as this water action is you can trust your entire wash to the "Standard" Electric Clothes-washer.

The all-metal wringer is adjustable to four positions around the wringer post, thus permitting the washer to be used effectively with one or two trays. The wringer rolls are of soft rubber and there is a special safety feature whereby the tension of the rollers may be released instantly.

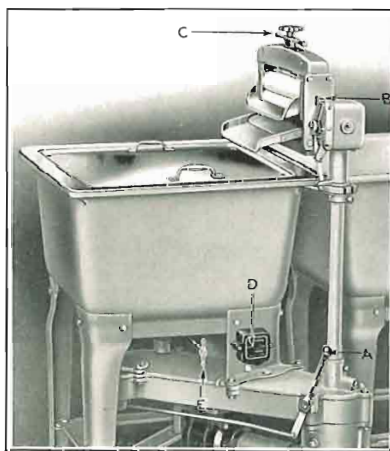
The power of the motor is transmitted to the agitator in the tub by a sturdy, simple shaft and gear, so arranged to allow the wringer to be used while the agitator is in motion.

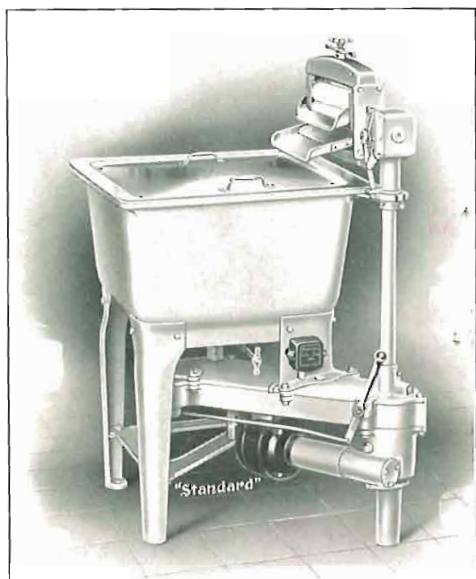
Ample power drives the agitator, gently but forcefully, as it carries the clothes through the rich suds, loosening all the dirt and soil.

All the controls of the Clothes-washer are within easy reach as shown in the illustration to the left. (A) is the lever which throws the agitator in and out of gear, (B) the lever which starts and stops the wringer and locks it in position, (C) the wringer tension screw and safety release, (D) the switch to operate the motor, (E) the handle which controls the washer drain.



View of the inside of the washing tray. Note the smooth, rounded corners and generous-size agitator.





Stationary Clothes-Washer - P 7500

cheaply constructed portable washers, thereby reducing their life and adding to their upkeep expense.

The tub is regularly furnished with the inside of white Acid-Resisting Enamel, and will hold the heat as no other washer can. Acid-Resisting Enamel is easy to clean, is not affected by strong soaps or cleansers, will keep its sparkling beauty always.

The outside of the tub and the legs and frame have Ming Green Duco Finish. The Chromard lid is removable and can be placed on the auxiliary trays and used as a sorting table. The motor regularly furnished is $\frac{1}{4}$ H. P., 110 Volts, A. C., 60 cycle, single phase.

The P 7510 is a complete laundry unit, which includes the washer and 2 trays similar in design. All can be connected to a single drain.

DIMENSIONS

P 7500—Width (back to front), 36 inches; height (floor to rim), $32\frac{1}{4}$ inches.

P 7510—Width (over two trays), 50 inches; back to front (tray and washer), 50 inches.

PRICES

P 7500..... \$175.00

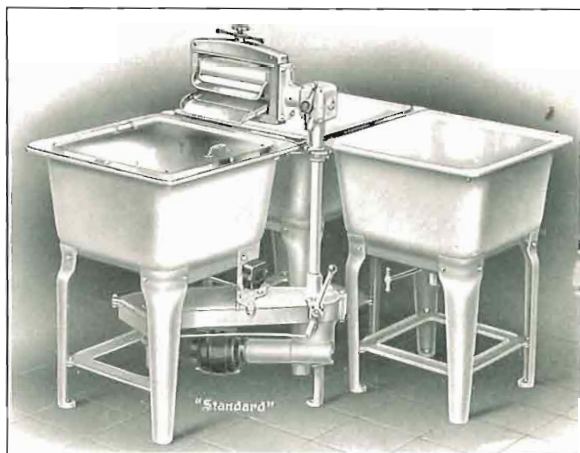
P 7510..... \$274.90

(Includes washer, 2 trays, and continuous drain.)

The "Standard" Electric Clothes-washer is a sturdy washer. The tub is of strong enameled iron, as are the legs, frame, and gear housing. There are no belts, the driving mechanism is a simple steel gear and arm, operating on ball bearings.

An exclusive feature is the fact that the washer can be directly connected to the supplies and drain, thereby becoming as permanent as the installed laundry trays. It can be filled and emptied without the use of hose or bucket.

Think of the convenience and advantage of a permanent washer in your home. No flimsy construction to get out of repair, no slopping the floor when filling and emptying the trays, no annoying vibration when the motor is running, no getting out of level which throws severe strains on many parts of



Clothes-Washer with two trays - P 7510



LAUNDRY TRAYS

For the past several years, the basement and laundry has been the scene of great improvement. Shower rooms, athletic rooms, lounging rooms, play rooms, have been installed.

Gas and automatic-fired furnaces have been responsible for cleaner, more orderly basements. Today the housewife shows her guests her modern laundry with as much pride as she does her rooms upstairs.

Yet no matter with what unusualness the arrangement or decorative idea of a laundry might be planned, it is absolutely essential that the items of equipment installed there must be of the highest efficiency, if full value and satisfaction are to be had.

The enameled laundry tray in sparkling enamel, which is the very best material for this fixture, adds beauty to any laundry. Its bright, cleanly appearance is sure to meet approval, its one-piece design and easy-to-clean enamel, make it superior to all other types.

Acid-Resisting Enamel is ideal for the laundry tray, as it is not affected by strong soaps or cleansers,

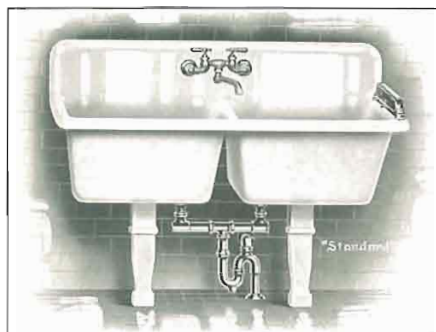
The Four-way is a two compartment tray designed to stand away from the wall, thereby permitting one to work all around it. It is supplied by a sturdy swinging-spout faucet finished in Chromard, and which has two extra valves for a hose to fill the washing machine.

The Alden is a tray with a back and two compartments cast in a single piece and with a swinging-spout faucet to supply hot, cold or tempered water to either tray.

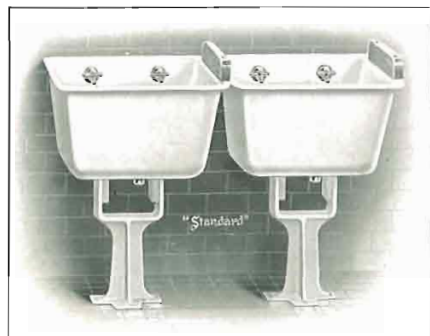
The Montrose is an economical two piece tray to stand against or away from the wall. It is shown with a hardwood wringer holder for each tray which permits the use of a hand wringer. If you prefer these fixtures in color, your Plumber will gladly quote prices.



Four-way - P 7308 B



Alden - P 7302 Q

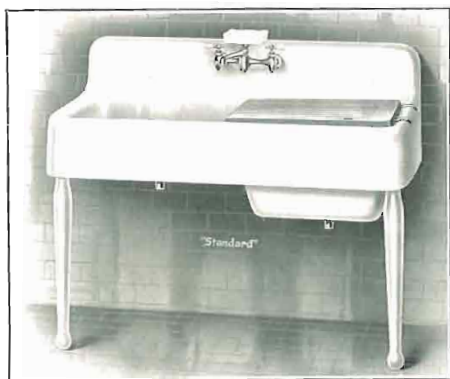


Montrose - P 7380 E

PRICES (Fixtures in White):

(With Chromard Fittings)	A-R Enamel	Regular Enamel
P 7302 Q, 54 x 26 in.	\$142.00	\$120.60
P 7308 B, 51 x 27 in.	126.05
P 7380 E, 48 x 23 in. (two sections)	53.30	45.30





Radcliffe - P 7432 Q S

COMBINATION SINK AND LAUNDRY TRAY

Here is a fixture for the small kitchen, or for the kitchen of the housewife who desires to wash, conveniently, her fine lingerie and linen by hand.

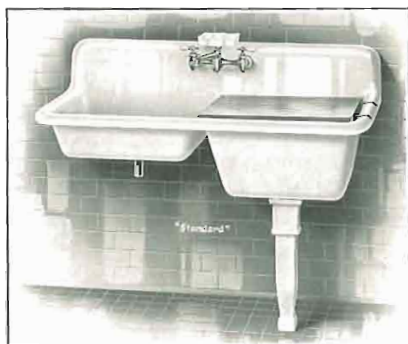
This style of fixture is particularly desirable, also, for apartment kitchens, where space is limited. And, too, it provides the most efficient type of fixture to use with built-in cabinets. The 13-inch deep tray is valuable for a number of kitchen uses, as well as for washing of clothing.

"Standard" sink and laundry tray combinations include the essential features of both of these fixtures. The interchangeable wood drain-board, when placed over the tray compartment, gives all the advantages of a sink; when used with the laundry tray and placed over the sink, it becomes a sorting table or handy work bench.

The Radcliffe P 7432 Q S (P 7433 Q S, with sink compartment on the right) has an 8-inch low back, an 8-inch deep apron, a sink compartment 8 inches deep and a tray with a depth of 13 $\frac{1}{4}$ inches. It is supported on wall hangers and two adjustable enameled legs. The K 902 S faucet supplies hot, cold or tempered water to both sink and tray.

The Bacon is illustrated in two ways—one with a swinging spout faucet, one with separate hot and cold water faucets. In the P 7426 A F type, which has an 8-inch deep sink, faucets which supply the tray are below the level of the drain-board.

All these fixtures are priced in regular enamel, but, here too, Acid-Resisting Enamel in color will provide greater distinction. Ask your Plumber for prices of these fixtures in Acid-Resisting Enamel.



Bacon - P 7427 Q S



Bacon - P 7426 A F

PRICES:

(With Chromard Fittings)	IN COLOR	IN WHITE
Size—50 x 24 inches.		
P 7426 A F, or P 7425 A F, (sink on left)	\$70.15	\$60.15
P 7427 Q S, or P 7428 Q S, (sink on right)	72.25	61.25
P 7432 Q S, or P 7433 Q S	82.40	68.70
Size—42 x 24 inches.		
P 7432 Q S, or P 7433 Q S	73.05	61.25

(For prices of these fixtures in Ionian Black, see Note, page 45)



Remodel the old bathroom, install an extra one
with the

"Standard" TIME PAYMENT PLAN

Every home today is run upon a budget basis: so much for food, for clothing, for amusements, for savings and for educational purposes. Whether or not the home has a definite "Budget Plan", there is no doubt a definite schedule for these and other expenses.

If you are a home owner and are interested in modernizing the old bathroom, or if you want and need a second bathroom or a downstairs lavatory; if you have found in this book those very plumbing fixtures you have desired so long and do not have the ready cash, you will be interested to know about the "Standard" Time Payment Plan—the plan that permits you to put these improvements in your Budget, to pay for them as you use and enjoy them.

The Standard Sanitary Mfg. Co.'s Time Payment Plan is an easy financing plan which brings the latest styled and most improved plumbing fixtures within the reach of every family. By using this simple plan you can have a remodeled bathroom that is not only useful, but beautiful. You can install that extra bathroom that your growing family needs, you can brighten the kitchen with a new sink in white or in color, you can have an efficient "Standard" Clothes-washer or a new set of laundry trays.

Every home owner with a reasonable equity in his home may use this plan to finance the purchase of "Standard" Plumbing Fixtures. Only a small amount of cash is needed—the balance, including your plumber's charge for installing the plumbing fixtures, may then be paid in convenient installments.

Ask any plumbing merchant who sells "Standard" Plumbing Fixtures to give you an estimate of the cost of the plumbing fixtures you want and the cost of installing them. Of this total amount you can pay as little as 10 per cent in cash. You can have up to two years to pay the balance in monthly installments.*

Example: Suppose the cost of the plumbing fixtures you select and your plumber's charge for installing them is \$400.00. You pay \$40.00 in cash and arrange to pay the balance, including the financing charge, in equal monthly installments, the number of installments not to exceed twenty-four and the amount of each installment to be not less than \$10.00. Eighteen installments would amount to approximately \$22.00 per month.

The cost of all the materials and labor needed to make simple changes or repairs incident to the replacement of your old plumbing fixtures with modern plumbing fixtures, can be financed through your plumbing contractor under the terms of this plan.

There is no red tape. You are not asked to have friends endorse you, you are not embarrassed by any credit investigation. And this plan further assures you of a correct and efficient installation, for plumbing dealers with a reputation for good work are the only ones permitted to use the plan.

Your plumber will prepare the simple forms which are necessary in the operation of this plan. If your plumber is unable to do this, write to the Standard Sanitary Mfg. Co., Pittsburgh, and the forms will be prepared for you, or you will be given the names of responsible plumbing merchants in your own community who can prepare them.

Any "Standard" Showroom or Branch, the addresses of which are listed on pages 62 and 63 of this book, will be glad to explain the plan.



Be sure the Brass Fittings are "Standard"



Parts of a RENU assembly. Left, the assembled unit; center, stem, right, above, cap—below, the RENU barrel.

The parts you don't see in plumbing fixtures—the concealed parts of the fittings—are as important as those you do see. These are the only mechanical parts of practically all plumbing fixtures, these are the parts of the fixture which must deliver the water, must carry it away, must protect your rooms against damage due to leaks, must protect your health from sewer gas, etc.

Unless the fittings operate efficiently, regularly, day after day, your fixture—no matter how beautiful in design or color—will not be satisfactory. Do not take for granted that if you specify "Standard" Plumbing Fixtures you will receive a complete "Standard" installation.

"Standard" brass fittings are of heavy brass, carefully made, and subject to rigorous inspection. They contain extra weight, extra thickness, are given extra care in selection of materials and in their construction—assuring that service to which you are entitled, and which every plumbing fixture should give. Only by using "Standard" fittings on "Standard" fixtures will you receive the service that you expect of the fixtures. See that every fitting bears the mark, "Standard".

With most fittings the wear occurs on parts which are inseparable from the rest of the fitting, and the whole fitting must be replaced. In "Standard" fittings with the RENU feature, above, only the parts subject to wear need be replaced. All that is required is to remove the cap, lift out the stem and the barrel which contains all the wearing parts, and make the necessary replacements.

These Faucets, too, should be "Standard"



K 1660



K 1665

Take a moment to consider these fittings which are seldom mentioned in specifications. The important supply valves in the basement, the shut-off valves to the various fixture lines, the drain valves for hot water tanks, the faucets on the outside of the house for sprinkling the lawn—these, by all means, must be of sturdy construction, of superior quality, of good design and workmanship, if your entire plumbing installation is to be what you expect.

The K 1660 and K 1665 are shut-off valves which drain the supply pipes, thereby preventing lines bursting from freezing. The K 1670 and K 1680 are lawn faucets, sturdily made to withstand the rigors of the weather. The K 1688 is a useful faucet to be used in basement or garage for filling of pails, etc. "Standard" rough-brass items are made as carefully as the faucets on your lavatory and bear the "Standard" trade mark.



K 1670

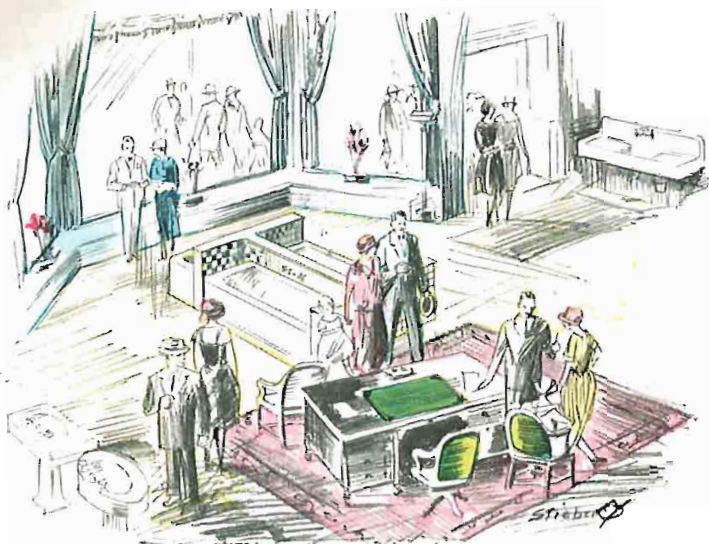


K 1680



K 1688





If you live in or near one of the cities listed on pages 62 and 63, be sure to visit the "Standard" Showroom. These interesting Showrooms are maintained by the **Standard Sanitary Mfg. Co.** to further its service to architects, plumbing contractors and home owners.

You do not need to have definite plans for the purchase of plumbing fixtures to be cordially received in a "Standard" Showroom—your interest in more comfortable and pleasant living will make you a welcome visitor.

There you can see the beautiful plumbing fixture designs and colors which have inspired a new interest in bathroom furnishing and decoration. There you can see that artistic combination of fixture, fitting, background, color, lighting and arrangement that will immediately convey to you the meaning of "style and individuality in plumbing fixtures". Fixtures in white and of more economical cost are also widely displayed for your inspection.

There, too, you may see the "Standard" Dishwasher and the "Standard" Clothes-Washer in actual operation, and you may have as many demonstrations of these remarkable machines as you desire.

Showroom representatives can be of material help to you in the suggestions for room decoration, artistic fixture arrangement, novel lighting effects and harmony of bathroom color schemes which they will gladly give, should you be undecided in the solution of any of these phases of your bathroom decorative problems.

Experienced and helpful, they will be glad to discuss every phase of home sanitation, explain the "Standard" Time Payment Plan, and if you desire, make out the forms required in the operation of this plan.

To make it easy to obtain estimates for the installation of plumbing fixtures and fittings you select, a portfolio shown on this page, listing and illustrating them, will be prepared for you. There is no charge for this service which does much to prevent mistakes and to assure complete satisfaction with the installation.



HOW TO GET WHAT YOU WANT IN

"Standard" PLUMBING FIXTURES

Visit a "Standard" Showroom, if possible. That is the most satisfactory way to select plumbing fixtures. There you can see the actual fixtures and make comparisons, there you can discuss your problems with experienced "Standard" attendants, there you can secure help in originating color schemes and in developing pleasing bathroom arrangements. When your selections are made, specifications providing for their installation will be written for you without charge. You can then take the specifications to your Plumber with the certainty that there should be no misunderstanding.

If you cannot visit a "Standard" Showroom, make your selection from this book. Then take the book to your Plumber and in it point out the fixtures and fittings you want. If he does not have them in stock he can order and, with very few exceptions, get them promptly. Secure a copy of your written order. In this written order the fixtures and fittings should be designated exactly as shown in this book. The letter following the number designates the type of fitting and must be shown. Also specify the size of each fixture.

If your preference is for color, bear in mind the advantage of installing fixtures made by the same manufacturer. Specify "Standard"—vitreous china fixtures, enameled fixtures, and fittings with china parts in the same color. If you have selected fixtures from a "Standard" Showroom, see that the specification includes a sample of the "Standard" fixture color you desire, and a sample of the color of the shower curtains, closet seats, and any other items in color.

Remember that enameled fixtures are made either with Acid-Resisting or regular enamel. If you want a fixture made with Acid-Resisting Enamel, specify "Acid-Resisting Enamel". If you want regular enamel, specify "Regular Enamel".

Be sure that the fittings you want are specified to show the style and correct finish from the list described on the inside of the back cover. If any other combinations of fixture and fittings than those mentioned in this book are desired, consult your Plumber.

IMPORTANT

To prevent misunderstandings, bear in mind that the prices in "Standard" booklets, catalogues, and advertisements are approximate, as they do not include labor and other installation charges. Remember, also that the prices in this book are subject to change without notice, as are changes in the form or design of the fixtures and fittings illustrated.



The service of the nation-wide "Standard" organization

The "Standard" nation-wide system of Showrooms, Warehouses, and Branches is maintained only that you might receive the highest degree of satisfactory service.

The Showrooms make it possible for you to see the actual fixtures before you buy, and assist you in securing correct specifications. When you have made your selection, any plumber you may choose can secure the fixtures you want from the nearby "Standard" Branch or Warehouse. If there is no plumber near you, write to the closest "Standard" unit and you will immediately be furnished the names of several who can supply your requirements.

Then, too, if you are desirous of using the "Standard" Time Payment Plan, and cannot locate a plumber who can make the necessary arrangements, the nearest "Standard" unit will be glad to furnish the names of several Time Payment Plumbers in your vicinity.

Standard Sanitary Mfg Co., Pittsburgh

Division of

AMERICAN RADIATOR & STANDARD SANITARY CORPORATION

"Standard" Branches, Showrooms and Sales Offices

*AKRON, O. (Showroom)	Crosier and High Streets
*ALTOONA, PA. (Showroom)	1615 Ninth Avenue
ATLANTA, GA. (Sales Office)	204 Norris Building, Peachtree Street
ATLANTA, GA. (Showroom)	221 Peachtree Street
BALTIMORE, MD. (Showroom and Sales Office)	334 North Charles Street
*BEAUMONT, TEXAS (Branch Warehouse)	Fannin and Orange Streets
*BIRMINGHAM, ALA. (Showroom)	503 Twenty-second Street, South
BOSTON, MASS. (Showroom and Sales Office)	186-200 Devonshire Street
BROOKLYN, N. Y. (Showroom)	375-379 Flatbush Avenue, Ext.
BUFFALO, N. Y. (Showroom)	374 Delaware Avenue
*CANTON, O. (Showroom)	1120 High Avenue, S. W.
*CHICAGO, ILL.	3716 Iron Street
CHICAGO, ILL. (Showroom and Sales Office)	900 South Michigan Avenue
CHICAGO, ILL. (Northwest Branch)	4508 Lawrence Avenue
CHICAGO, ILL. (South Branch)	7725-33 South State Street
CHICAGO, ILL. (Ravenswood Service Station)	4339-31 North Western Avenue
CHICAGO, ILL. (Roseland Service Station)	10433-35 South Michigan Avenue
CINCINNATI, O. (Showroom and Sales Office)	Southeast Corner Seventh and Walnut Streets
*CLEVELAND, O. (Showroom)	4409 Euclid Avenue
*CLEVELAND, O. (West Side Branch—Showroom)	10800 Lorain Avenue
*CLEVELAND, O. (Mayfield Branch)	2044 Ransom Road
*COLUMBUS, O. (Showroom)	503-519 South Front Street
*DALLAS, TEXAS (Showroom)	1200 Jackson Street
*DECATUR, ILL. (Showroom)	502 East William Street
*DENVER, COLO.	1730 Blake Street
DENVER, COLO. (Showroom)	1716 Blake Street
*DETROIT, MICH. (Showroom and Sales Office)	5943 Second Boulevard
*DETROIT, MICH. (Burnette Branch)	9181 Burnette Avenue
*DETROIT, MICH. (East Side Branch)	3747 Bewick Avenue
*EAST ST. LOUIS, ILL.	21 North Seventh Street
*EL PASO, TEXAS (Showroom)	160 North Piedras Street
*ERIE, PA. (Showroom)	130 West Twelfth Street
*EVANSTON, ILL.	2108 Jackson Street
*EVANSVILLE, IND.	Illinois and Governor Streets
*FORT WAYNE, IND.	126-128 West Columbia Street
*FORT WORTH, TEXAS (Showroom)	1601-07 North Ballinger Street
*GRAND RAPIDS, MICH.	90 Market Avenue
HAMILTON, ONT., CANADA (Showroom)	20-28 Jackson Street, West
*HOUSTON, TEXAS (Showroom)	2300 McKinney Avenue
*HUNTINGTON, W. VA. (Showroom)	Second Avenue and Tenth Street
*INDIANAPOLIS, IND. (Showroom)	846 North Senate Avenue
*JOLIET, ILL.	Railroad and McDonough Streets
KANSAS CITY, MO. (Showroom and Sales Office)	1021 Grand Avenue
*KNOXVILLE, TENN. (Showroom)	218 East Depot Street
LONG ISLAND CITY, N. Y. (Showroom and Sales Office)	32-04 Northern Boulevard
*LORAIN, O.	Tenth and Broadway
LOS ANGELES, CALIF. (Sales Office)	210-224 South Central Avenue
LOS ANGELES, CALIF. (Showroom)	3251 Wilshire Boulevard, near Vermont Street
*LOUISVILLE, KY. (Showroom)	Broadway and Campbell Street
*MANSFIELD, O. (Showroom)	East Fifth and Elm Streets
*MEMPHIS, TENN. (Showroom)	666 Beale Avenue



"Standard" Branches, Showrooms and Sales Offices (continued)

*MILWAUKEE, WIS.	1627 St. Paul Avenue
MILWAUKEE, WIS. (Showroom)	447 Broadway
MINNEAPOLIS, MINN. (Showroom and Sales Office)	915 Nicollet Avenue
*MOBILE, ALA. (Showroom)	306 North Royal Street
*MONTGOMERY, ALA. (Branch Warehouse)	210 Conasa Street
*NASHVILLE, TENN. (Showroom)	1705 Church Street
NEWARK, N. J. (Showroom and Sales Office)	1020 Broad Street
NEWARK, N. J. (Showroom)	528 Ferry Street
*NEW ORLEANS, LA. (Branch and Showroom)	846 Baronne Street
NEW ORLEANS, LA. (Sales Office)	517 Canal Bank Building
NEW YORK, N. Y. (Showroom and Sales Office)	18 East Forty-fifth Street
OAKLAND, CALIF. (Showroom)	1630 Webster Street
*OAK PARK, ILL.	260 Madison Avenue
*OSHKOSH, WIS.	39 Cape Street
*PEORIA, ILL. (Showroom)	112-114 Main Street
PHILADELPHIA, PA. (Showroom and Sales Office)	1215 Walnut Street
*PHOENIX, ARIZ. (Showroom)	447 East Jefferson Street
PITTSBURGH, PA. (Showroom and Sales Office)	Bessemer Building, 106 Sixth Street
*PITTSBURGH, PA.	213 Galveston Avenue
*PITTSBURGH, PA. (East End Branch)	6587 Hamilton Avenue
PORTLAND, ORE. (Showroom)	Pacific Building, 182 Sixth Street
*QUINCY, ILL. (Showroom)	330 South Sixth Street
*RACINE, WIS.	Sixteenth and Junction Avenues
RICHMOND, VA. (Showroom and Sales Office)	304 East Grace Street
*ROCK ISLAND, ILL. (Showroom)	1015-1017 Second Avenue
ST. LOUIS, MO. (Sales Office)	Continental Life Building
*ST. LOUIS, MO. (Showroom)	4140 Forest Park Boulevard
*SAN ANTONIO, TEXAS (Showroom)	1101 Broadway
SAN FRANCISCO, CALIF. (Showroom)	349 Sutter Street
SAN FRANCISCO, CALIF. (Sales Office)	501 Sixth Street, Corner of Bryant Street
SEATTLE, WASH. (Sales Office)	1242 First Avenue, South
SEATTLE, WASH. (Showroom)	1301-1303 Fifth Avenue
*SHREVEPORT, LA. (Showroom)	1557-1559 Texas Avenue
*SOUTH BEND, IND. (Showroom)	1811 South Main Street
*SPRINGFIELD, ILL. (Branch Warehouse)	507 North Fourth Street
SPRINGFIELD, MASS. (Sales Office)	155 Chestnut Street
SPRINGFIELD, MASS. (Showroom)	Chestnut and Winter Streets
*SPRINGFIELD, O.	1226-38 Warder Street
SYRACUSE, N. Y. (Sales Office)	302-303 Herald Building
*TOLEDO, O. (Showroom)	1002-1010 Summit Street
TORONTO, ONT., CANADA (Sales Office)	Royce and Landsdowne Avenues
TRENTON, N. J. (Showroom and Sales Office)	120 Carroll Street
*TUCSON, ARIZ. (Showroom)	247 North Fourth Avenue
*WACO, TEXAS (Branch Warehouse)	Eleventh Street and Mary Avenue
WASHINGTON, D. C. (Showroom and Sales Office)	1412 F. Street, N. W.
WASHINGTON, D. C. (Government Dept.)	124 Willard Hotel
*WHEELING, W. VA. (Showroom)	46 Eighteenth Street
*WICHITA FALLS, TEXAS (Showroom)	Fourteenth Street and Scott Avenue
*YOUNGSTOWN, O. (Showroom)	West and Tod Avenues

Warehouses

Baltimore, Md.	5313 Holabird Avenue
Boston, Mass.	365 C Street, South Boston
Long Island City, N. Y.	"Standard" Building, 32-04 Northern Boulevard
Los Angeles, Calif.	216 South Central Avenue
Newark, N. J.	528-534 Ferry Street
Philadelphia, Pa.	Glenwood Avenue and Oxford Street
Richmond, Calif.	P. O. Box, W.
Seattle, Wash.	1242 First Avenue, South

Export

New York, N. Y., 50 Broad Street	San Francisco, Calif., 349 Sutter Street
Buenos Aires, Argentine Rep., S. A., Calle Cordoba 817, (Entre Piso)	
Tokio, Japan	Shanghai, China
Melbourne and Sydney, Australia	Manila, P. I.
	Auckland, N. Z.

Service at "Standard" Branches: In the cities marked (*) are carried complete lines of Plumbing and Heating Supplies, Farm Water Supply Systems, Tools and Supplies for Mills, Mines and Factories, also for the Water, Gas, Steam and Oil Industries. Write or call on nearest Branch.

European Sales Offices

AMERICAN RADIATOR & STANDARD SANITARY CORPORATION

Vienna, Austria	London, England	Munich, Germany
Brussels, Belgium	Lille, France	Amsterdam, Holland
Vilvorde, Belgium	Lyons, France	Milan, Italy
Birmingham, England	Marseilles, France	Barcelona, Spain
Brighton, England	Paris, France	Madrid, Spain
Hull, England	Berlin, Germany	Zurich, Switzerland



8-10 2 C M

LOOK FOR THE NAME

"Standard"

How can you be sure that the plumbing fixtures and fittings installed in your home are the **"Standard"** Plumbing, Fixtures and Fittings you specified? These trade-marks will enable you to distinguish the products of the **Standard Sanitary Mfg. Co.** from all others. Do not wait until the plumbing fixtures are installed to look for these protective identification marks. Look for them immediately upon the delivery of the plumbing fixtures at your home.

"Standard"

This trade-mark is printed permanently under the glaze of vitreous china plumbing fixtures, printed permanently in the enamel of plumbing fixtures made of regular enamel, and cast or stamped in the metal of brass fittings.

"Standard" A-R

This trade-mark, printed permanently in the enamel, identifies plumbing fixtures made of **"Standard"** Acid-Resisting Enamel.

RE-NU

The word **RE-NU** on **"Standard"** Brass Goods indicates renewable seats and threads, a **"Standard"** feature.

Church Seats

"Church" brand Seats, which are standard equipment on **"Standard"** water closets, are identified by this trade-mark, which is pressed into the under side of the seat.

CONSULT A RESPONSIBLE PLUMBER

Almost every city has established legal safeguards against the faulty installation of plumbing. This has been necessary because faulty plumbing is a danger to health and life. Who is thoroughly familiar with these legal safeguards established in your city? Who is best qualified to install the plumbing in your home? A Master Plumber! His knowledge of sewerage, gas and water systems is invaluable to you. Depend upon him for accurate advice on your plumbing problems. Use his services to secure a correct and satisfactory plumbing installation in your home.





FITTINGS FOR "Standard" BATHS AND LAVATORIES IN DISTINCTIVE DESIGNS AND COLORS

"Standard" fittings, both metal and china, are obtainable in a variety of designs and finishes. Shown above, in the first panel, are fittings for the Pemberton lavatories, and the popular Mastercraft design for lavatories. The special design fitting for the Templeton is shown on page 15; that for the Castleton on page 17.

In the second panel are shown the parts used in "Standard" Mastercraft bath and shower combinations. These and the fittings shown in the first panel are obtainable in the following finishes:

- Finish X —All Chromard.
- Finish G —All Gold plate.
- Finish XH—Chromard with Gold hammered panels.

Finish XC—Chromard with Chromard hammered panels.

Finish GH—Gold plate with Gold hammered panels.

Finish GC—Gold plate with Chromard hammered panels.

The styles in the lower panel are those commonly furnished for most "Standard" lavatories. The designs and finishes, left to right, are:

All-metal design in Gold plate—Finish Y G. (Can also be had with Chromard Finish (Finish Y) or nickel-plate (Finish Z).

Design with china handles, escutcheon and lift knob. (Can be had with metal parts in Chromard or nickel-plate and china parts in white or the nine "Standard" colors).



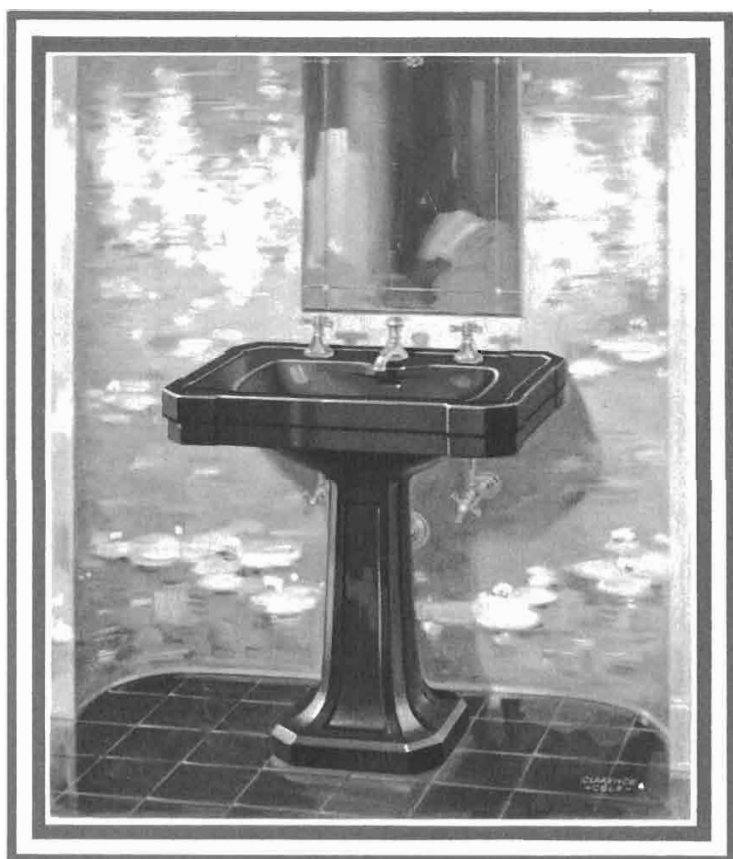
PLUMBERS SUPPLY CO.

P. O. Box 740

New Bedford, Mass.

"Standard"
PLUMBING FIXTURES
for the HOME

no 7/89



"Standard"
PLUMBING FIXTURES
for the HOME



PLUMBERS SUPPLY CO.

P. O. Box 740

New Bedford, Mass.

"Standard"
PLUMBING FIXTURES
for the HOME